

# *Injectronics*

**NEW & REMANUFACTURED  
AIR FLOW & AIR MASS METERS**

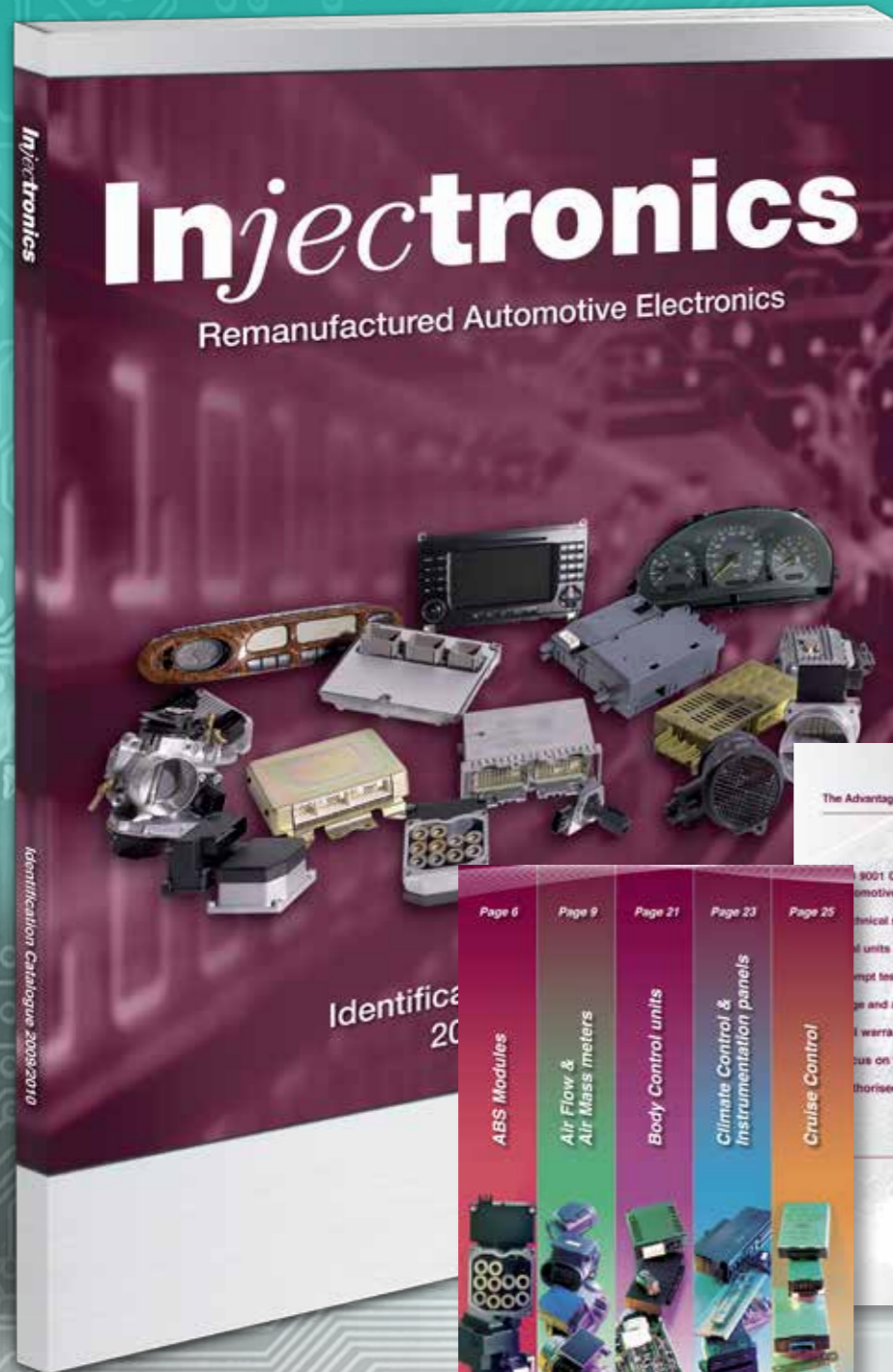


Remanufacturing solutions  
for transportation electronics  
[www.injectronics.com.au](http://www.injectronics.com.au)



# Injectronics

**REMANUFACTURED SOLUTIONS  
FOR TRANSPORTATION ELECTRONICS**



[www.injectronics.com.au](http://www.injectronics.com.au)

**NEW & REMANUFACTURED  
AIRFLOW & AIR MASS METERS**

**Contents**

## CONTENTS



About Air Meters.....	6
ALFA ROMEO .....	10
AUDI .....	10
BMW .....	14
CHEVROLET.....	22
CHRYSLER.....	22
CITROEN.....	22
DODGE.....	22
EUNOS.....	22
FERRARI .....	22
FIAT .....	24
FORD .....	24
HOLDEN.....	28
HYUNDAI.....	34
JAGUAR.....	36
JEEP .....	36
KIA.....	36
LAND ROVER.....	38
LEXUS.....	38
MAZDA.....	40
MERCEDES.....	44
MITSUBISHI .....	52
NISSAN.....	56
PEUGEOT.....	60
PORSCHE.....	60
PROTON .....	62
RANGE ROVER.....	62
RENAULT .....	62
SAAB .....	62
SEAT.....	64
SKODA .....	64
SSANGYONG.....	64
SUBARU .....	66
SUZUKI .....	68
TOYOTA.....	70
VOLKSWAGEN .....	76
VOLVO .....	86
Warranty, Terms and Conditions .....	86



## People use Injectronics because:



### Largest Range

Injectronics has Australia's largest range of the highest quality remanufactured automotive electronic components in stock. This includes an

extensive range of Australian, Asian, and European parts, as well as new parts.

### In Stock, Ready for Immediate Delivery

The Injectronics range is in stock and available for immediate delivery to satisfy your customer without delay.

Distributors

We have distributors that stock and support our products Australia-wide, to satisfy your requirements quickly and efficiently.

Competitive Pricing

Our pricing structures enable you to increase your competitive edge, whilst providing you with generous returns.

### Free Technical Support

As part of Injectronics commitment to excellence, our technical department is always available to assist you or your customers with any automotive electronic problem. Our qualified and experienced technicians will advise on numerous makes, including Japanese, European and Australian built cars.



### Trial Unit Availability

Injectronics provides time and cost saving 'trial units' to test and help diagnose your customers vehicle problems.



### ISO 9001:2000 Quality Endorsement

Injectronics' focus and dedication to supplying the highest quality remanufactured products is evident by the achievement of its quality accreditation. This endorsement is unique to the industry and provides customers with peace of mind.

Injectronics has earned a commendable reputation in the automotive electronic repair industry for excellence in quality.

### The Injectronics Advantage

#### Satisfaction Guaranteed

All Injectronics remanufactured products are covered by a 'hassle free' satisfaction guaranteed warranty.

*All remanufactured units come with our 2 year 'Peace of Mind' no fuss warranty.*



#### Trial Units

As part our continued service to the automotive industry, we are able to offer some of our remanufactured parts on a 'trial basis' to assist customers with diagnosing difficult vehicle problems.

This economical service will save you and your customers a lot of time, money and frustration, and is extremely useful when the vehicle has an intermittent problem.

In all cases, please talk to our technical department before ordering the part from your local Injectronics stockist. Our technical department may be able to solve your problem over the phone.

# Remanufacturing solutions for transportation electronics

### Trial Unit Process

- Call Injectronics and talk to our technical department to discuss the vehicle's problem. If necessary, order a trial unit from your local Injectronics stockist. They will invoice the part and send it out to you.
- If the part solves your customer's problem, simply return the old core unit, together with the necessary documentation, to your place of purchase.
- If the trial unit does not solve your customer's problem, send the part back with the original invoice and a note explaining that it was a trial unit. When the part arrives back at Injectronics, we will bench test the returned unit to confirm its correct operation.
- If the unit tests okay, your Injectronics stockist will invoice you a 'Retest & Repackaging Fee' plus any freight charges. A credit will be processed for the original purchase.

(where applicable) been completed:

- Fuel pressure and fuel flow
- Injection pulse
- Ignition/spark
- Power supply's to ECM
- Earths to ECM
- Earths to body
- Earths to engine
- Fault codes (including pass code)

Injectronics do not test vehicles at its facilities, only parts are tested.



### Technical Service Helpline

As part of Injectronics service to you, we are able to offer free technical assistance via phone, fax, email or our web site.

Thousands of callers have benefited from the knowledge and expertise we have accumulated in our field, over many years. Our team of technical advisers can provide valuable technical services that include:

- wiring diagrams
- fault code interpretations
- adjustment procedures
- information on common reported faults
- testing procedures
- technical bulletins

*Please note: This service is for trade customers only. We are unable to deal with retail customers who do not possess the required expertise or testing equipment.*

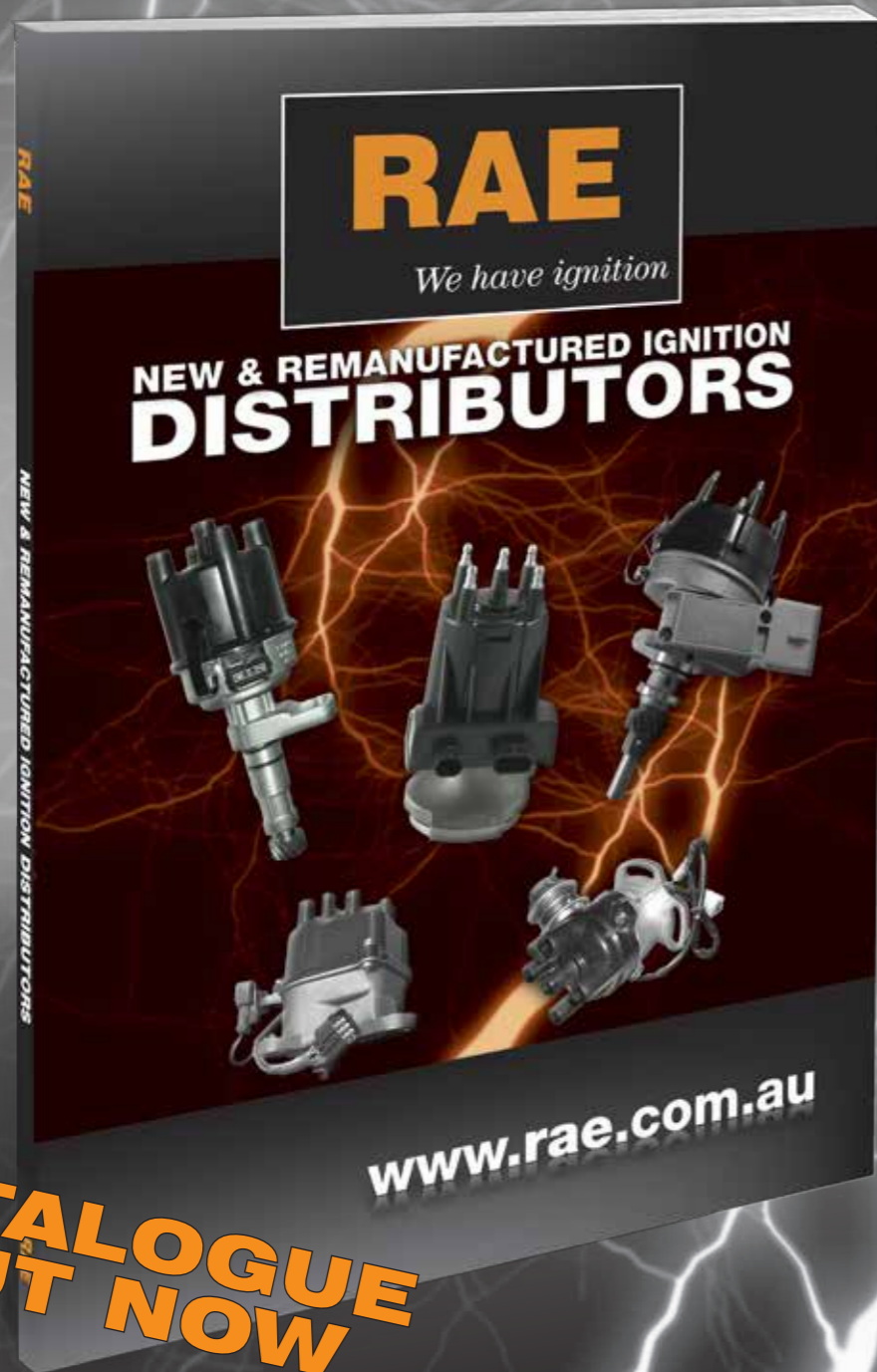
*Before you call for advice, please make sure that the following engine problem tests have*

# Injlectronics

# RAE

*We have ignition*

## NEW & REMANUFACTURED IGNITION DISTRIBUTORS



**CATALOGUE  
OUT NOW**

[www.rae.com.au](http://www.rae.com.au)

# dat equipment

**Diagnostic Auto Tech equipment.**  
*"Making diagnosis easier"*



TE014



TE012



TE036



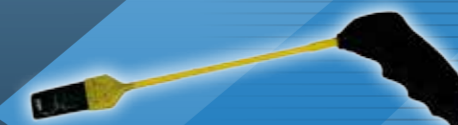
TE016



TE028



TE030



TE032



TE034



TE010



TE022



TE024

To view the latest products go to [www.dat-equipment.com.au](http://www.dat-equipment.com.au)  
Available from your nearest Injectronics / RAE Reseller

### What does an air meter do?

An air meter is generally located within the intake ducting of a vehicles engine and is used to precisely measure the quantity of intake air entering a fuel injected, internal combustion engine. This measurement is then relayed to the vehicles engine management computer in the form of a signal voltage or frequency. The ECM then computes this signal and in conjunction with various other engine sensors, calculates how long the engines fuel injectors need to be opened to deliver the optimum air fuel ratio to the engines cylinders.



### What may happen if an air meter fails?

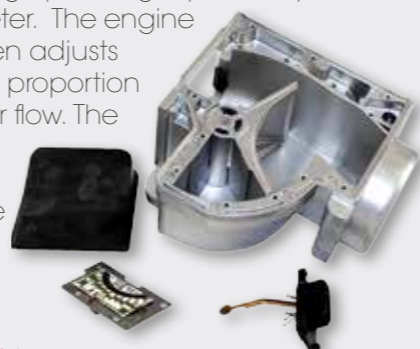
Air meters often fail due to external forces or can simply wear out over time. When this happens, engine performance will often decrease significantly, the engine can idle rough, lack power or produce "pinging" noises under light throttle. A failing air meter can cause an overly rich or lean fuel mixture will also affect the engines exhaust emissions. A failing air meter can also illuminate the Malfunction Indicator Lamp (MIL), which would inturn set an air meter fault code in the engine control modules memory.

### What types of air meter are in use?

An air meter generally uses one of four methods to measure the air flow rate of an internal combustion engine. These four methods include the flap or vane type meter which utilises a sensor vane attached to a variable potentiometer, the hot wire type meter where the engine control module measures the voltage required to keep the hot wire at a pre-determined temperature, the vortex type meter which uses ultrasonics to measure the frequency of air pressure oscillation or vortices, and the hot film type meter which measures the difference between an upstream and downstream temperature sensor printed on a membrane within the air stream.

### Flap or vane type meter.

In a flap type air meter, the air flowing through the body of the meter is moving from atmospheric pressure, to the low pressure created in the engine by downward movement of the engines pistons. This incoming air acts against the meters sensor flap and forces the flap to open to a point where the air flows without restriction. The flap opens and closes on a shaft which is connected to a wiper arm which inturn operates along a potentiometer, the potentiometer and wiper translating flap movement into a varying voltage pending wiper arm position on the potentiometer. The engine control module then adjusts injector duration in proportion to the volume of air flow. The same principal of operation is also used in sliding core type air meters.



### Hot wire and hot element type meter

A hot wire air meter determines the mass of air flowing into the engine's air intake system. This is achieved by heating a platinum wire with an electric current that is suspended in the engine's air stream. The wire's electrical resistance increases as the wire's temperature increases, which reduces electrical current flowing through the circuit. When air flows past the wire, the wire cools, decreasing its resistance, which in turn allows more current to flow through the circuit. As more current flows, the wire's temperature increases until the resistance reaches its predetermined equilibrium again. The amount of current required to maintain the wire's temperature is directly proportional to the mass of air flowing past the wire. The integrated electronic circuitry converts the measurement of current into a voltage signal which is sent to the ECU.



### Karmen Vortex type meter

A Karmen Vortex air meter works by setting up a laminar air stream. This is accomplished by a honeycomb mesh air flow regulator positioned at the inlet side of the air meter housing. The incoming laminar air stream is then disrupted by a vertical vortex generating rod which creates asymmetrical vortices thereafter. The created vortices then modulate an ultrasonic wave which is transmitted across the air flow at a constant frequency. The modulated ultrasonic waves are detected as a rich or lean condition by the signal receiver, and are then converted into pulses. The pulses are then analysed by the engine control module which inturn, adjusts injector duration in proportion to the volume of air flow.



### Hot film or membrane type meter

The hot film air meter uses a very thin electronic membrane placed in the air stream to measure air flow. The membrane has a thin film temperature sensor printed on the upstream side, and one on the downstream side. A heater is integrated in the center of the membrane which maintains a constant temperature similar to the hot-wire air meter approach. Without any airflow, the temperature profile across the membrane is uniform. When air flows across the membrane, the upstream side cools differently from the downstream side. The difference between the upstream and downstream temperature indicates the mass airflow and is directly proportional to the mass of air flowing past the membrane. The integrated electronic circuitry converts the measurement into a voltage signal which is sent to the ECU, which inturn, adjusts injector duration in proportion to the volume of air flow.



### What are common causes of air meter failure?

To enable any air meter to measure and work efficiently, they need to be maintained correctly. Regular maintenance of the engine air cleaner element, along with a well tuned engine are crucial to the air meters operational longevity.

#### Common causes of failure in air meters can include:

- dirt, debris and oil can contaminate the hot-wire deteriorating its accuracy
- exposure to high under bonnet temperatures mechanical failure of internal electronic circuit links excessive engine vibration
- improper use of cleaning solvents on hotwire and hot film elements
- backfire damage from an incorrectly tuned engine using compressed air in an attempt to clean a sensor hotwire or element
- worn bearings and potentiometers in flap type meters



Damage/broken hot wire.



Damage/Broken vane.

### How do Injectronics test and recalibrate air meters?

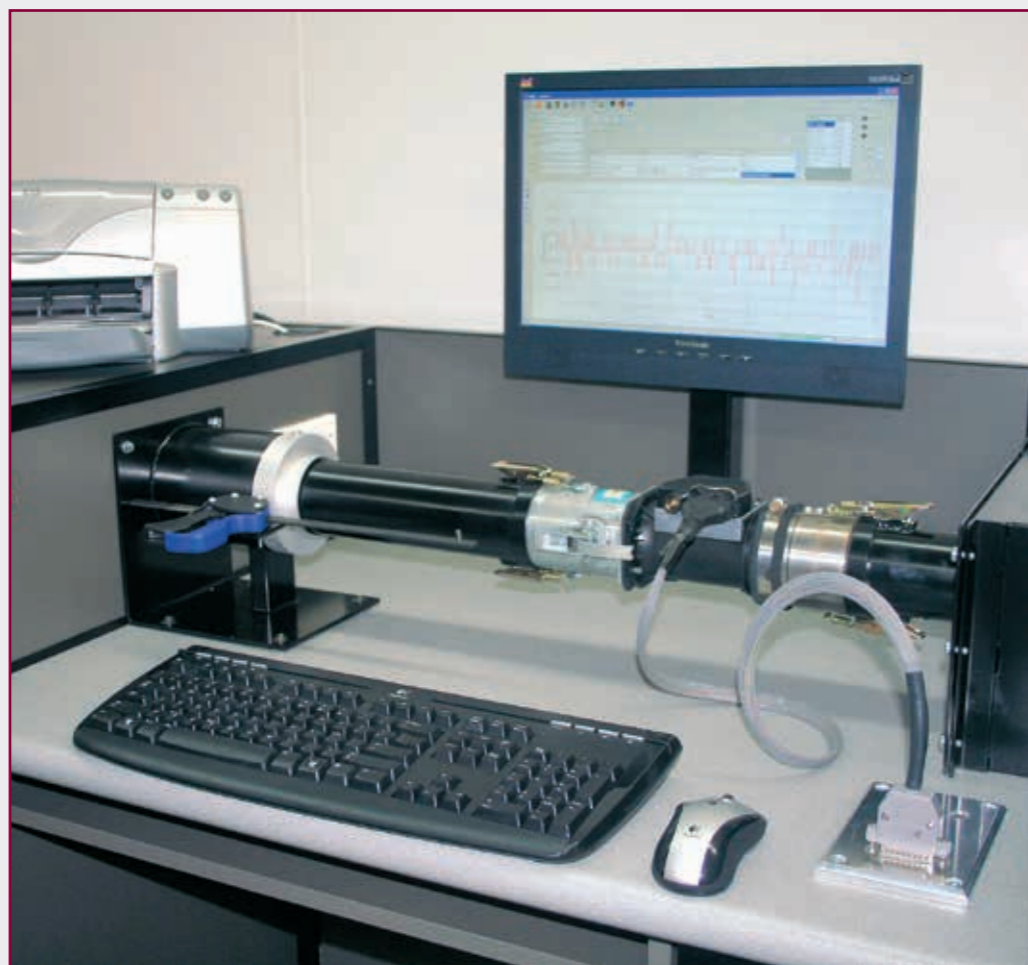
The Injectronics air meter calibration process is based on comparing output values of the air meter being tested or calibrated, against a set of original values, and then comparing the outputs. This process is fully automated using one of the Injectronics computerized air flow testing stations. If the differential in output voltage or frequency falls outside allowable tolerances, the meter is then calibrated electronically or mechanically to within tolerance of original specifications.



Analysers Fixture

The following is a brief overview of how the computerised air flow testing stations operate:

- A new OE (original equipment) unit is learnt in to the air flow testing station and its calibration values are then stored into the computers software. Units to be tested are then fitted to the testing station by a series of specific adaptors and a designated wiring harness.
- The testing station then generates and delivers pre-determined volumes of air through the unit being tested, with the units output at each pre-determined air volume being displayed and compared against the output of the original unit stored in the software.
- Out of tolerance units are then calibrated to meet the OE unit specification, and then ran through a test mode to ensure accurate calibration has been achieved.
- All results, pre and post calibration and testing, can be stored in the software and printed out on an easily read graph showing where the units output lies in comparison to the allowable tolerances.



Calibrating Air Mass Meter.

### What is involved in the Injectronics remanufacturing process of air meters?

(have pics of units in various stages of disassembly)  
The Injectronics remanufacturing process of flap type air meters involves four main stages.

- The first stage is to dismantle the unit by removing the electronic componentry, comprising of the connector plug, wiper arm, potentiometer circuit board, clock spring and temperature sensor. The housing base plate is then removed which allows the sensor flap to also be removed. Original sensor flap shaft bearings are discarded. All components are then assessed for serviceability and replaced if necessary.
- The second stage involves thorough cleaning of the air meter housing, the sensor flap, the connector plug and the plastic lid that protects the electronic components.
- The third stage involves reassembling the unit using new bearings on the sensor flap shaft, and taking particular care to ensure the housing base plate is refitted and sealed with silicone to ensure no air leaks.
- The fourth and final stage is to calibrate the air meter to within tolerances of OE specifications on the computerised air flow testing station. Once this operation is complete, the plastic electronics protector lid is refitted and the unit is labeled with appropriate stickers and is ready for sale.

The process for hotwire type air meters is not dissimilar to the vane type in the fact that the units are all dismantled, the parts are all cleaned and the finished product is calibrated on the same air flow testing station. The differences are that each platinum wire within a hotwire type air meters venturi is carefully replaced with new platinum wire by trained Injectronics technicians, and that the original circuit board is discarded and replaced with a new Injectronics designed, adjustable circuit board which enables Injectronics to use that one type of circuit board across many different part numbers throughout the remanufactured hotwire air meter range.



Disassembly of Air Mass Meter



Cleaning Process



Remanufactured Air Mass Meter.

Cant Find the Air Mass Meter your looking for?  
Please contact Injectronics on 03 8792 6999 or NZ 0800 536 547  
or search online @ [www.injectronics.com.au](http://www.injectronics.com.au)

Make	Model	Series	Cyl	Engine Size	Engine type	Year	Remanufactured Change over	NEW OEM Complete Assy	NEW OEM Insert Only
<b>ALFA ROMEO</b>									
ALFA ROMEO	156	AR932	4 CYL	2.0	AR32301	10/1997 - 2/2000		AM1960N	AM83BOSN
ALFA ROMEO	156		6 CYL	2.5	AR32401/2	1997 - 2000	AM7531	AM7531N	
ALFA ROMEO	164	AR164	6 CYL	3.0		1988 - 1992	AM2201		
ALFA ROMEO	166		6 CYL	3.0	AR34301/2	1998 - 2000	AM7531	AM7531N	
ALFA ROMEO	ALFA 33	AR905	4 CYL	1.5		1982 - 1992	AM0601		
ALFA ROMEO	ALFA 33	AR907	4 CYL	1.7		1/1990 - 3/1992	AM2206		
ALFA ROMEO	ALFA 75	AR019	6 CYL	2.5	AR01911	2/1986 - 2/1992	AMX2010		
ALFA ROMEO	ALFA 75	AR162	4 CYL	2.0	AR0612	1/1987 - 2/1992	AM2202	AM2202N	
ALFA ROMEO	ALFA 90		6 CYL	2.5	AR01646	1985 - 1988	AMX2010		
ALFA ROMEO	GTV	AR916	4 CYL	2.0	AR162.01	4/1999 - 9/2000		AM1960N	AM83BOSN
ALFA ROMEO	GTV		6 CYL	2.5	AR01646	11/1980 - 2/1987	AMX2013		
ALFA ROMEO	SPIDER	AR916	4 CYL	2.0	AR162.01	4/1999 - 9/2000		AM1960N	AM83BOSN
ALFA ROMEO	SPIDER	AR916	4 CYL	2.0	AR323.01	4/1999 - 9/2000		AM1960N	AM83BOSN
<b>AUDI</b>									
AUDI	80	B2	5 CYL	2.2		1984 - 1987	AM4001		
AUDI	80		4 CYL	2.0	ABK	9/1991 - 5/1995	AM2130		
AUDI	A3	8L1	4 CYL	1.8	AGN	9/1996 - 6/2001	AM8002	AM8002N	
AUDI NOTE: CHASIS NO 8LW ON	A3	8L1	4 CYL	1.8	AGU	8/1997 - 6/2003		AM7117N	
AUDI	A3	8L1	4 CYL	1.8	APG	8/1998 - 4/2003		AM8060N	AM60BOSN
AUDI NOTE: TO CHASIS NO. 8LY050	A3	8L1	4 CYL	1.8	APP	8/1998 - 5/2000	AM8023	AM8023N	AM80BOSN
AUDI NOTE: FROM CHASIS NO. 8LY050	A3	8L1	4 CYL	1.8	APP	8/1998 - 5/2000	AM8032	AM8032N	AM80BOSN
AUDI	A3	8L1	4 CYL	1.8	AUM	5/2000 - 8/2000	AM8032	AM8032N	AM80BOSN
AUDI	A3	8L1	6 CYL	3.2	BDB	7/2003 - 8/2004			AM80BOSN
AUDI	A3	8L1	6 CYL	3.2	BMJ	9/2004 - 10/2005			AM80BOSN
AUDI	A3	8L1	6 CYL	3.2	BUB	2005 - 2007			AM80BOSN
AUDI	A3		4 CYL	1.6	AEH	1996 - 2001		AM6010CN	
AUDI	A3		4 CYL	1.6	AVU	2000 - 2002		AM6010CN	
AUDI	A3		4 CYL	1.6	BFQ	5/2002 - 6/2003		AM6010CN	
AUDI	A3		4 CYL	1.9	BLS	2007 - 2009			AM80BOSN



AM0601



AM2022



AM7531



AM2013



AM8023



AM8002



AM8032



AM7117

Cant Find the Air Mass Meter your looking for?  
Please contact Injectronics on 03 8792 6999 or NZ 0800 536 547  
or search online @ [www.injectronics.com.au](http://www.injectronics.com.au)

Make	Model	Series	Cyl	Engine Size	Engine type	Year	Remanufactured Change over	NEW OEM Complete Assy	NEW OEM Insert Only
<b>AUDI continued</b>									
AUDI TURBO DIESEL	A3		4 CYL	1.9	BLS	2007 - 2009		AM2531N	
AUDI TURBO DIESEL	A3		4 CYL	1.9	BXE	2007 - 2009		AM2531N	
AUDI DIESEL	A3		4 CYL	2.0	BKD	2004 - 2006			AM80BOSN
AUDI	A4		4 CYL	1.8	BEX	11/2002 - 12/2004			AM80BOSN
AUDI	A4		4 CYL	1.8	BFB	2002 - 2004			AM80BOSN
AUDI	A4		4 CYL	1.8	ADR	2/1999 - 4/1999			AM80BOSN
AUDI TURBO	A4		4 CYL	1.8	AVJ	12/2000 - 6/2002			AM80BOSN
AUDI DIESEL	A4		4 CYL	2.0	BLB	11/2004 - 11/2005			AM80BOSN
AUDI DIESEL	A4		4 CYL	2.0	BRE	2005 - 2006			AM80BOSN
AUDI	A4		6 CYL	2.4	AMM	6/2000 - 9/2001	AM7008	AM7008N	
AUDI	A4		6 CYL	2.4	AMM	6/2000 - 9/2001	AM7008	AM7008N	
AUDI	A4		6 CYL	2.4	APS	2/1999 - 9/2001	AM7008	AM7008N	
AUDI	A4		6 CYL	2.8	APR	2/1999 - 6/2000	AM7008	AM7008N	
AUDI	A6		8 CYL	4.2	ASG	6/2000 - 1/2005			AM80BOSN
AUDI	A6		8 CYL	4.2	BAT	4/2004 - 5/2006			AM80BOSN
AUDI	A6		6 CYL	2.4	APS	11/1998 - 5/2001	AM7008	AM7008N	
AUDI	A6		6 CYL	2.4	BDV	6/2001 - 1/2005	AM7008	AM7008N	
AUDI	A6		6 CYL	2.8	APR	11/1998 - 5/2001	AM7008	AM7008N	
AUDI	A6		8 CYL	4.2	ARS	4/1999 - 5/2001		AM8015N	
AUDI	A6		8 CYL	4.2	BAS	4/2003 - 8/2005			AM80BOSN
AUDI	A8		8 CYL	4.2	BFM	11/2002 - 5/2006			AM80BOSN
AUDI	A8		8 CYL	4.2	AQF	10/1998 - 2/2001		AM8015N	
AUDI NOTE: REQUIRES 2 UNITS	Q7	4LB	8 CYL	4.2	BAR	2006 - 2010			AM80BOSN
AUDI NOTE: REQUIRES 2 UNITS	RS4		6 CYL	2.7	ASJ	6/2000 - 10/2000			AM80BOSN



AM2531



AM8015



AM7008



Cant Find the Air Mass Meter your looking for?  
 Please contact Injectronics on 03 8792 6999 or NZ 0800 536 547  
 or search online @ www.injectronics.com.au

Make	Model	Series	Cyl	Engine Size	Engine type	Year	Remanufactured Change over	NEW OEM Complete Assy	NEW OEM Insert Only
<b>AUDI continued</b>									
<b>AUDI</b>	RS6		8 CYL	4.2	BCY / BRV	7/2002 - 9/2004			AM80BOSN
<b>AUDI</b>	S2	B4	4 CYL	2.2	ABY	1994 - 1996	AM3007		
<b>AUDI</b>	S3		4 CYL	1.8	APY / AUL	11/1998 - 4/2001			AM80BOSN
<b>AUDI</b>	S4	C4	4 CYL	2.2	AAN	1993 - 1995	AM3007		
<b>AUDI</b>	S4		6 CYL	2.7	AGB	10/1997 - 6/2000			AM80BOSN
<b>AUDI</b>	S4		8 CYL	4.2	BBK	2003 - 2006			AM80BOSN
<b>AUDI</b>	S6		8 CYL	4.2	ANK	9/2000 - 9/2002			AM80BOSN
<b>AUDI</b>	S6		8 CYL	4.2	AQJ	9/1999 - 5/2001		AM8047N	
<b>AUDI</b>	S8		8 CYL	4.2	AVP	9/2000 - 9/2002			AM80BOSN
<b>AUDI</b>	TT	8J3	6 CYL	3.2	BUB	7/2006 - 2010			AM80BOSN
<b>AUDI</b>	TT	8N3	4 CYL	1.8	AJQ	12/1999 - 8/2000	AM8032	AM8032N	AM80BOSN
<b>AUDI</b>	TT	8N3	4 CYL	1.8	APX	10/1998 - 8/2001		AM8034N	AM80BOSN
<b>AUDI</b>	TT	8N3	4 CYL	1.8	ARY	9/1999 - 5/2005			AM80BOSN
<b>AUDI</b>	TT	8N3	4 CYL	1.8	AUM	1/2001 - 6/2006			AM80BOSN
<b>AUDI</b>	TT	8N3	4 CYL	1.8	AUQ	9/2000 - 6/2006			AM80BOSN
<b>AUDI</b>	TT	8N3	4 CYL	1.8	BAM	9/2000 - 6/2006			AM80BOSN
<b>AUDI</b>	TT	8N9	6 CYL	3.2	BHE	7/2003 - 7/2006			AM80BOSN
<b>BMW</b>									
<b>BMW</b>	3.0si	E3	6 CYL	3.0	30 E LA	1975 - 1977	AMX3002		
<b>BMW</b>	316 ci	E46	4 CYL	1.6	16 4 E3	10/1999 - 9/2002	AM7124	AM7124N	
<b>BMW</b>	316 i	E36	4 CYL	1.6	164E1/2	9/1988 - 9/2000	AM0204		
<b>BMW</b>	318 i	E30	4 CYL	1.8	18 4E	7/1982 - 12/1987	AM2050		
<b>BMW</b>	318 i	E30	4 CYL	1.8	18 4E 1	1982 - 1992	AM2134		
<b>BMW</b>	318 i	E30	4 CYL	1.8	M40	1/1988 - 3/1993	AM2203		
<b>BMW</b>	318 i	E30	4 CYL	1.8		1983 - 1987	AM2039		
<b>BMW</b>	318 i	E36	4 CYL	1.8	18 4E 1/2	1991 - 1998	AM2134		
<b>BMW</b>	318 i	E46	4 CYL	1.8	19 4 E1	11/1998 - 9/2001	AM7124	AM7124N	
<b>BMW</b>	318 is/ti	E36	4 CYL	1.9	19 4 S1	3/1995 - 12/1999	AM7110	AM7110N	
<b>BMW</b>	320 ci	E46	6 CYL	2.2	22 6 S	9/2000 - 9/2006	AM9626	AM9626N	
<b>BMW</b>	320 i	E30	4 CYL	2.0	20 6E	12/1985 - 12/1993	AM2083		
<b>BMW</b>	320 i	E36	4 CYL	2.0	20 6 S	9/1992 - 10/1996	AM9007	AM9007N	



AM7110



AM7124



AM9626



AM8032



AM2203



AM9007



AM8034

**Cant Find the Air Mass Meter your looking for?**  
 Please contact Injectronics on 03 8792 6999 or NZ 0800 536 547  
 or search online @ [www.injectronics.com.au](http://www.injectronics.com.au)

Make	Model	Series	Cyl	Engine Size	Engine type	Year	Remanufactured Change over	NEW OEM Complete Assy	NEW OEM Insert Only
<b>BMW continued</b>									
BMW	320 i	E46	6 CYL	2.2	22 6 S1	9/2000 - 9/2005	AM9626	AM9626N	
BMW	323 ci	E46	4 CYL	2.5	B25	4/1998 - 9/2000	AM9626	AM9626N	
BMW	323 i	E30	6 CYL	2.3	23 6E	1982 - 1986	AM2090		
BMW	323 i	E30	6 CYL	2.3	23 6E	- 9/1985	AM2031		
BMW	323 i	E36	6 CYL	2.5	B25	10/1994 - 12/1999	AM9600	AM9600N	
BMW	323 i	E46	6 CYL	2.5	B25	4/1998 - 9/2000	AM9626	AM9626N	
BMW	323 ti	E36	6 CYL	2.5	B25	6/1997 - 9/2000	AM9600	AM9600N	
BMW	325 ci	E46	6 CYL	2.5	25 6S	9/2000 - 9/2006	AM9626	AM9626N	
BMW	325 e	E30	6 CYL	2.7		1/1985 - 12/1987	AM2066	AM2066N	
BMW	325 e	E30	6 CYL	2.7		1/1985 - 12/1987	AM2083		
<i>CONFIRM OE NUMBER FOR CORRECT APPLICATION</i>									
	325 e	E30	6 CYL	2.7		1/1985 - 12/1987	AM2090		
	325 e	E30	6 CYL	2.7		1/1985 - 12/1987	AM2091		
BMW	325 i	E30	6 CYL	2.5	25 6E	12/1985 - 12/1991	AM2092		
BMW	325 i	E36	6 CYL	2.5	B25 6S	- 9/1993	AM3011		
BMW	325 i	E36	6 CYL	2.5	B25 6S	1991 - 1995	AM7502	AM7502N	
BMW	325 i	E46	6 CYL	2.5	25 6S	9/2000 - 3/2005	AM9626	AM9626N	
BMW	325 ti	E46	6 CYL	2.5	25 6S	6/2001 - 12/2004	AM9626	AM9626N	
BMW	325i	E30	6 CYL	2.5	25 6k	12/1986 - 12/1991	AM2082		
BMW	328 ci	E46	6 CYL	2.8	B28	4/1998 - 9/2000	AM9626	AM9626N	
BMW	328 i	E36	6 CYL	2.8	B28	10/1994 - 12/1999	AM9600	AM9600N	
BMW	328 i	E46	6 CYL	2.8	B28	11/1998 - 9/2000	AM9626	AM9626N	
BMW	330 ci	E46	6 CYL	3.0	306S	5/2000 - 9/2006	AM96132	AM96132N	
BMW	330 i	E46	6 CYL	3.0	306S	5/2000 - 3/2005	AM96132	AM96132N	
BMW	330i	E90	6 CYL	3.0	N52B30	2005 - 2008			AM97502N
BMW	330i	E91	6 CYL	3.0	N52B30	2005 - 2007			AM97502N
BMW	520 i	E28	6 CYL	2.0	20 6E	9/1982 - 12/1987	AM2031		
BMW ADJUSTABLE CO SCREW	520 i	E34	6 CYL	2.0	20 6 S	10/1990 - 11/1992	AM2010A		
BMW NON ADJ SCREW	520 i	E34	6 CYL	2.0	20 6 S	10/1990 - 11/1992	AM2010		
BMW	520 i	E34	6 CYL	2.0	B20	10/1992 - 12/1995	AM9007	AM9007N	
BMW	523 i	E39	6 CYL	2.5	B25	10/1998 - 9/2000	AM9626	AM9626N	



**Cant Find the Air Mass Meter your looking for?**  
**Please contact Injectronics on 03 8792 6999 or NZ 0800 536 547**  
**or search online @ [www.injectronics.com.au](http://www.injectronics.com.au)**

Make	Model	Series	Cyl	Engine Size	Engine type	Year	Remanufactured Change over	NEW OEM Complete Assy	NEW OEM Insert Only
<b>BMW continued</b>									
BMW	523 i	E39	6 CYL	2.5	B25	9/1995 - 9/1998	AM9600	AM9600N	
BMW	525 e	E28	6 CYL	2.7		12/1984 - 12/1987	AM2066	AM2066N	
BMW	525 e	E28	6 CYL	2.7		12/1984 - 12/1987	AM2083		
BMW	525 e	E28	6 CYL	2.7		12/1984 - 12/1987	AM2090		
<i>CONFIRM OE NUMBER FOR CORRECT APPLICATION</i>							AM2091		
BMW	525 i	E34	6 CYL	2.5	M50 B25	10/1992 - 12/1995	AM7502	AM7502N	
BMW	525 i	E39	6 CYL	2.5	256S	9/2000 - 7/2003	AM9626	AM9626N	
BMW	525i	E34	6 CYL	2.5	25 65 1/2	1989 - 1995	AM3011		
BMW	525i	E34	6 CYL	2.5	25 6K 1	1988 - 1991	AM2082		
BMW	528 e	E28	6 CYL	2.7	27 6K	9/1981 - 12/1987	AM2029		
BMW	528 i	E12	6 CYL	2.8	28 6E	4/1977 - 12/1981	AMX3002		
BMW	528 i	E28	6 CYL	2.5	25 6E	6/1981 - 12/1987	AM2025		
BMW	528 i	E39	6 CYL	2.8	B28	1/1997 - 9/1998	AM9600	AM9600N	
BMW	528 i	E39	6 CYL	2.8	B28	10/1998 - 9/2000	AM9626	AM9626N	
BMW	530 i	E34	8 CYL	3.0	B30	9/1992 - 12/1995	AM7502	AM7502N	
BMW	530 i	E39	6 CYL	3.0	306S	9/2000 - 7/2003	AM96132	AM96132N	
BMW	535 i	E39	8 CYL	3.5	B35	1/1996 - 9/1998	AM7502	AM7502N	
BMW	540 i	E39	8 CYL	4.4	M62 B44	10/1998 - 7/2003		AM7814N	AM75BOSN
BMW	540i	E34	8 CYL	4.0	40 85 1	9/1992 - 9/1995	AM7800	AM7800N	
BMW	540i	E39	8 CYL	4.4	44 85 1/2	1/1996 - 9/1998	AM7800	AM7800N	
BMW	633 csi	E24	6 CYL	3.3		4/1976 - 9/1979	AMX3002		
BMW	633 csi	E24	6 CYL	3.3		4/1976 - 9/1979	AMX3011		
BMW	635 csi	E24	6 CYL	3.4		1986 - 1989	AM3027		
BMW	730 i	E32	6 CYL	3.0	B30	9/1991 - 10/1994	AM7502	AM7502N	
BMW	730 i	E38	8 CYL	3.0	B30	6/1994 - 12/1996	AM7502	AM7502N	
BMW	732i	E23	6 CYL	3.2		1979 - 1986	AM3018		
BMW	733 i	E23	6 CYL	3.3		5/1977 - 12/1982	AM3014		
BMW	733 i	E23	6 CYL	3.3		5/1977 - 12/1982	AM3016		
BMW	733 i	E23	6 CYL	3.3		5/1977 - 12/1982	AM3017		
BMW	733 i	E23	6 CYL	3.3		5/1977 - 12/1982	AMX3002		
BMW	733 i	E23	6 CYL	3.3		5/1977 - 12/1982	AMX3011		
BMW	735 i	E38	8 CYL	3.5	B35	9/1994 - 9/1998	AM7502	AM7502N	



AMX2010



AM2082



AM9600



AM9626



AM3011



AM7502



AM7800

**Cant Find the Air Mass Meter your looking for?**  
**Please contact Injectronics on 03 8792 6999 or NZ 0800 536 547**  
**or search online @ [www.injectronics.com.au](http://www.injectronics.com.au)**

Make	Model	Series	Cyl	Engine Size	Engine type	Year	Remanufactured Change over	NEW OEM Complete Assy	NEW OEM Insert Only
<b>BMW continued</b>									
BMW	735 i	E32	6 CYL	3.2	34 6E C/K B	1986 - 1992	AM3027		
BMW	735i	E23	6 CYL	3.4	34 6E A/C	1982 - 1986	AM3014		
BMW	740 i	E38	8 CYL	4.4	M62 B44	10/1998 - 12/2001		AM7814N	AM75BOSN
BMW	740iL	E38	8 CYL	4.4	M62 B44	10/1999 - 12/2001		AM7814N	AM75BOSN
BMW	750 i	E32	V12	5.0	50 12 A	9/1987 - 10/1994			
	<i>NOTE : ADJUSTABLE CO SCREW</i>								
	<i>NOTE NON ADJ SCREW</i>								
BMW	750 i	E32	V12	5.0	50 12 A	9/1987 - 10/1994	AM2010A		
BMW	750 i	E32	V12	5.0	50 12 A	9/1987 - 10/1994	AM2010		
BMW	750 i	E38	V12	5.4		6/1994 - 12/2001	AM7110	AM7110N	
BMW	840 i	E31	8 CYL	4.0	40 85 1	4/1993 - 3/1996	AM7800	AM7800N	
BMW	850 i	E31	V12	5.0	50 12 A	7/1989 - 12/1994			
	<i>NOTE : ADJUSTABLE CO SCREW</i>								
	<i>NOTE NON ADJ SCREW</i>								
BMW	850 i	E31	V12	5.0	50 12 A	7/1989 - 12/1994	AM2010A		
BMW	850 i	E31	V12	5.0	50 12 A	7/1989 - 12/1994	AM2010		
BMW	M3	E36	6 CYL	3.0	30 65 1	9/1992 - 9/1995	AM7806	AM7806N	
BMW	M3	E36	6 CYL	3.2	32 65 1/3	10/1995 - 12/1998	AM7806	AM7806N	
BMW	M5	E34	6 CYL	3.5		10/1988 - 12/1993	AM4001		
BMW	M5	E39	8 CYL	5.0	50 8S 1	1998 - 2003		AM7533N	
BMW	X3	E83	6 CYL	2.5	256S	2004 - 2009	AM9626	AM9626N	
BMW	X5	E53	6 CYL	3.0	306S	2001 - 2007	AM96132	AM96132N	
BMW	X5	E53	8 CYL	4.4	44 85 2	3/1999 - 9/2003			AM75BOSN
BMW	X5	E53	8 CYL	4.4	44 85 2	3/1999 - 9/2003		AM7814N	
BMW	X5	E53	8 CYL	4.6	46 85 1	2/2002 - 9/2003		AM7814N	AM75BOSN
BMW DIESEL	X5	E53	6 CYL	3.0	M57 D30	3/2001 - 9/2003			AM75BOSN
BMW	Z3	E36	4 CYL	1.9	19 4 S1	9/1995 - 12/1999	AM7110	AM7110N	
BMW	Z3	E36	6 CYL	2.8	B28	10/1998 - 9/2000	AM9626	AM9626N	
BMW	Z3	E36	6 CYL	2.0	B20	4/1999 - 12/2000	AM9626	AM9626N	
BMW	Z3	E36	6 CYL	2.2	22 6 S1	9/2000 - 12/2002	AM9626	AM9626N	
BMW	Z3	E36	6 CYL	3.0	306S	5/2000 - 12/2002	AM96132	AM96132N	
BMW	Z4	E85	4 CYL	3.0	M54 B30	2003 - 2006	AM96132	AM96132N	
BMW	Z4	E85	6 CYL	2.5	25 6S	10/2002 - 1/2006	AM9626	AM9626N	
BMW	Z4	E85	6 CYL	2.5	N52B25	2006 - 2009		AM97502N	
BMW	Z4	E89	6 CYL	2.5	N52B25	2009 - 2011		AM97502N	
BMW	Z4	E85	6 CYL	3.0	N52B30	2006 - 2009		AM97502N	
BMW	Z4	E89	6 CYL	3.0	N52B30	2009 - 2011		AM97502N	
BMW	Z8	E52	8 CYL	5.0	50 8S 1	2000 - 2003		AM7533N	



AMX2010



AM3014



AM9626



AM7814



AM7110



AM7806



AM96132



AM97502

**Cant Find the Air Mass Meter your looking for?**  
 Please contact Injectronics on 03 8792 6999 or NZ 0800 536 547  
 or search online @ [www.injectronics.com.au](http://www.injectronics.com.au)

Make	Model	Series	Cyl	Engine Size	Engine type	Year	Remanufactured Change over	NEW OEM Complete Assy	NEW OEM Insert Only
<b>CHEVROLET</b>									
CHEVROLET	CAMARO		8 CYL	5.0-5.7			AM3004 AM3009		
<i>HAS OE NUMBER 0280213004</i>									
<i>HAS OE NUMBER 0280213009</i>									
CHEVROLET	CORVETTE		8 CYL	5.7			AM3002 AM3009		
<i>HAS OE NUMBER 0280213002</i>									
<i>HAS OE NUMBER 0280213009</i>									
CHEVROLET	FIREBIRD		8 CYL	5.7			AM3004 AM3009		
<i>HAS OE NUMBER 0280213004</i>									
<i>HAS OE NUMBER 0280213009</i>									
<b>CHRYSLER</b>									
CHRYSLER	VOYAGER		4 CYL	2.8	ENS	2008 -			AMAFH7049N
<b>CITROEN</b>									
CITROEN	BX		4 CYL	1.6		1984 - 1994	AM2056		
CITROEN	BX		4 CYL	1.9	BFW	3/1988 - 3/1993	AM2202	AM2202N	
CITROEN	BX		4 CYL	1.9	DFW	3/1988 - 3/1993	AM2202	AM2202N	
CITROEN <i>TURBO DIESEL</i>	DISPATCH	G9C	4 CYL	2.0	120	2007 - 2010			AM9621N
<b>DODGE</b>									
DODGE	NITRO		4 CYL	2.8	ENR	2007 -			AMAFH7049N
DODGE	NITRO		4 CYL	2.8	ENS	2008 -			AMAFH7049N
<b>EUNOS</b>									
EUNOS	800		6 CYL	2.3	KJ	1992 - 2001	AM1272		
<b>FERRARI</b>									
FERRARI	348		8 CYL	3.4	F119 F000	2/1990 - 4/1994	AM2018		
FERRARI	360		8 CYL	3.5	F131	3/1999 - 12/2004		AM1960N	AM83BOSN
FERRARI	360		8 CYL	3.5	F131B	6/2000 - 2004		AM1960N	AM83BOSN
FERRARI	MONDIAL		8 CYL	3.4	F119D	10/1989 - 2/1994	AM2018		



AM3002



AM3004



AM2056



AM2202



AM1960

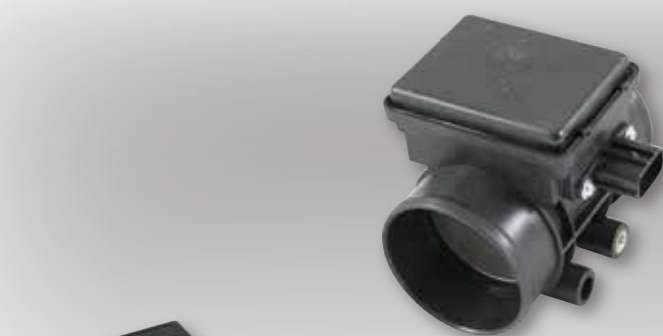
**Cant Find the Air Mass Meter your looking for?**  
 Please contact Injectronics on 03 8792 6999 or NZ 0800 536 547  
 or search online @ [www.injectronics.com.au](http://www.injectronics.com.au)

Make	Model	Series	Cyl	Engine Size	Engine type	Year	Remanufactured Change over	NEW OEM Complete Assy	NEW OEM Insert Only
<b>FIAT</b>									
FIAT	124		4 CYL	2.0		6/1980 - 4/1985	<b>AM2023</b>		
FIAT	ARGENTA		4 CYL	2.0		1983 - 1985	<b>AM2038</b>		
FIAT	CROMA		4 CYL	2.0		1986 - 1990	<b>AM2102</b>		
FIAT	DUCATO		4 CYL	2.8	M14 8140.43S	4/2002 -	<b>AM2184</b>	<b>AM2184N</b>	<b>AM83BOSN</b>
FIAT <i>TURBO DIESEL</i>	SCUDO		4 CYL	2.0		2002 - 2005		<b>AM9621N</b>	
FIAT	SPIDER	124	4 CYL	2.0		1982 - 1985	<b>AM2023</b>		
FIAT	X19		4 CYL	1.5		1988 - 1990	<b>AM0024</b>		
<b>FORD</b>									
FORD	CAPRI	SA-SC-SE	4 CYL	1.6		1989 - 1994	<b>AMB630</b>		
FORD <i>TURBO model</i>	CAPRI	SA-SC-SE	4 CYL	1.6		1989 - 1994	<b>AMB660</b>		
FORD	CORSAIR	UA	4 CYL	2.0	CA20	11/1989 - 8/1992	<b>AM2008</b>		
FORD	CORSAIR	UA	4 CYL	2.4	KA24	1988 - 1992	<b>AM0034</b>		
FORD <i>HAS 5 PIN PLUG</i>	COURIER	PC	4 CYL	2.6	G6	1990 - 1998	<b>AM0011</b>		
FORD <i>HAS 6 PIN PLUG</i>	COURIER	PD	4 CYL	2.6	G6	1990 - 1998	<b>AM0012</b>		
FORD <i>HAS 3 PIN PLUG</i>	COURIER	PE / PG	4 CYL	2.6	G6	1999 - 2006	<b>AMFP39</b>	<b>AMFP39N</b>	
<b>LPG SPECIAL APPLICATION (has higher resistance to back fire)</b>								<b>AMFP39BOS</b>	
FORD <i>HAS 3 PIN PLUG</i>	ECONOVAN	JH	4 CYL	2.0	FE	2003 - 2007	<b>AMFP39</b>	<b>AMFP39N</b>	
<b>LPG SPECIAL APPLICATION (has higher resistance to back fire)</b>								<b>AMFP39BOS</b>	
FORD	ESCAPE	BA-ZA-ZB	6 CYL	3.0	AJ	1/2000 - 1/2006	<b>AMXF2F</b>		
FORD	ESCAPE	ZB-ZC	4 CYL	2.3	L3	2003 - 2008	<b>AMZL01</b>		<b>AMZL01N</b>
FORD	EXPLORER	UN / UP	6 CYL	4.0	1FM	1/1996 - 12/1998	<b>AMF57F</b>		
FORD	EXPLORER	UQ / US / UT	6 CYL	4.0	1FM	1/1999 - 8/2003	<b>AMXF2F</b>		
FORD	EXPLORER	UT,UX,UZ	8 CYL	4.6	2ZA	2001 - 2008		<b>AMAFH8006N</b>	
FORD	EXPLORER	UZ	6 CYL	4.0	XZA	11/2003 - 1/2008			<b>AM9636N</b>
FORD	FALCON	AU	8 CYL	5.0		9/1998 - 9/2002	<b>AMF57F</b>		
FORD <i>DOES NOT SUIT GT</i>	FALCON	EB- EL	8 CYL	5.0		1991 - 1998	<b>AM0013</b>	<b>AM0013N</b>	



Cant Find the Air Mass Meter your looking for?  
 Please contact Injectronics on 03 8792 6999 or NZ 0800 536 547  
 or search online @ [www.injectronics.com.au](http://www.injectronics.com.au)

Make	Model	Series	Cyl	Engine Size	Engine type	Year	Remanufactured Change over	NEW OEM Complete Assy	NEW OEM Insert Only
<b>FORD continued</b>									
<b>FORD</b> SUITS GT ONLY	FALCON	EB- EL	8 CYL	5.0		1991 - 1998	<b>AM0016</b>		
<b>FORD</b> HAS BLACK TOP COVER	FALCON	XE	6 CYL	4.1		1982 - 1984	<b>AM2048</b>		
<b>FORD</b> HAS BLUE TOP COVER	FALCON	XF	6 CYL	4.1		1984 - 1988	<b>AM2077</b>		
<b>FORD</b>	FESTIVA	WB / WD / WF	4 CYL	1.3	B3	1/1994 - 12/2001	<b>AMB3H7</b>	<b>AMB3H7N</b>	
<b>FORD</b>	FESTIVA	WB / WD / WF	4 CYL	1.5	B5	11/1996 - 12/2001	<b>AMF7BF</b>		
<b>FORD</b>	FOCUS	LR	4 CYL	1.8		2002 - 2005	<b>AMAFH6013</b>	<b>AMAFH6013N</b>	
<b>FORD</b>	FOCUS	LR	4 CYL	2.0		2002 - 2005	<b>AMAFH6013</b>	<b>AMAFH6013N</b>	
<b>FORD</b>	FOCUS	ST170	4 CYL	2.0	3C	2003 - 2005		<b>AM4060N</b>	
<b>FORD</b>	LASER	KC-KE-KF	4 CYL	1.6		1989 - 1993	<b>AMB630</b>		
<b>FORD</b> SUITS TURBO MODEL	LASER	KC-KE-KF	4 CYL	1.6		1989 - 1992	<b>AMB660</b>		
<b>FORD</b>	LASER	KF-KH	4 CYL	1.6		1990 - 1995	<b>AMB6S7</b>		
<b>FORD</b>	LASER	KF-KH	4 CYL	1.8		1990 - 1995	<b>AMBP05</b>		
<b>FORD</b> SUITS TURBO MODEL	LASER	KF-KH	4 CYL	1.8		1990 - 1995	<b>AMBP26</b>		
<b>FORD</b>	LASER	KJ	4 CYL	1.6	B6	11/1994 - 10/1998	<b>AMB6BF</b>		
<b>FORD</b>	LASER	KJ	4 CYL	1.8	BP	11/1994 - 10/1998	<b>AMB6BF</b>		
<b>FORD</b>	LASER	KN-KQ	4 CYL	1.6	ZM	11/1998 - 12/2003	<b>AMZL01</b>		<b>AMZL01N</b>
<b>FORD</b>	LASER	KN-KQ	4 CYL	1.8	FP	11/1998 - 12/2003	<b>AMFP39</b>	<b>AMFP39N</b>	
<b>FORD</b>	LASER	KQ	4 CYL	2.0	FS	1/2001 - 12/2003	<b>AMFS1E</b>		
<b>FORD</b>	MONDEO	HA	6 CYL	2.5	ZT	1996 - 2000		<b>AM4060N</b>	
<b>FORD</b>	MONDEO	HA-HB	4 CYL	2.0	ZETEC	1/1993 - 5/1998	<b>AMAFH60</b>	<b>AMAFH60N</b>	
<b>FORD</b>	MONDEO	HC-HD	4 CYL	2.0	ZETEC	6/1996 - 5/1998	<b>AMAFH6013</b>	<b>AMAFH6013N</b>	
<b>FORD</b>	MONDEO	HC-HD-HE	4 CYL	2.0	ZETEC	6/1998 - 9/2000	<b>AMAFH6013</b>	<b>AMAFH6013N</b>	
<b>FORD</b>	MONDEO	HE	6 CYL	2.5	DURATEC	1999 - 2001		<b>AM4060N</b>	
<b>FORD</b> HAS 5 PIN PLUG	RAIDER	PC	4 CYL	2.6	G6	1990 - 1998	<b>AM0011</b>		



AM0016



AMB3H7



AMFP39



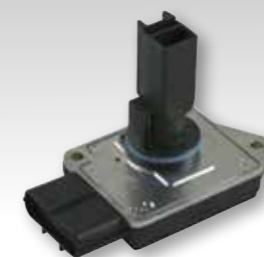
AMAFH60



AMB630



AMB6BF



AM4060



AMAFH6013

**Cant Find the Air Mass Meter your looking for?**  
 Please contact Injectronics on 03 8792 6999 or NZ 0800 536 547  
 or search online @ [www.injectronics.com.au](http://www.injectronics.com.au)

Make	Model	Series	Cyl	Engine Size	Engine type	Year	Remanufactured Change over	NEW OEM Complete Assy	NEW OEM Insert Only
<b>FORD continued</b>									
FORD	HAS 6 PIN PLUG	RAIDER	PD	4 CYL	2.6	G6	1990 - 1998	AM0012	
FORD	TURBO DIESEL	RANGER	PJ-PK	4 CYL	2.5		2006 - 2010		AMWLS1N
FORD	TURBO DIESEL	RANGER	PJ-PK	4 CYL	3.0		2006 - 2010		AMWLS1N
FORD		TAURUS	DN-DP	6 CYL	3.0		1996 - 1998	AMF6DF	
FORD		TELSTAR	AS	4 CYL	2.0	FE	1986 - 1987	AM0037	
FORD	TURBO	TELSTAR	AS	4 CYL	2.0	FE	1986 - 1987	AM00373	
FORD		TELSTAR	AT	4 CYL	2.2	F2	1987 - 1991	AMF201	
FORD		TELSTAR	AX	4 CYL	2.0	FS	1992 - 1994	AMB577	
FORD		TELSTAR	AX	6 CYL	2.5	KL	1/1992 - 12/1996	AMKL02	
FORD		TELSTAR	AY	4 CYL	2.0	FS	1992 - 1994	AMB577	
FORD		TELSTAR	AY	6 CYL	2.5	KL	1/1992 - 12/1996	AMKL02	
FORD		TRANSIT	VF-VG	4 CYL	2.0		1996-2000	AMAFH60	AMAFH60N
FORD		TRANSIT	VJ-VH	4 CYL	2.3		2006 - 2011	AM4110	AM4110N
<b>HOLDEN</b>									
HOLDEN		APOLLO	JK	4 CYL	2.0	3SFE	1989 - 1993	AM74140 AM74240	
		NOTE : HAS OE NUMBER 22250-74140 NOTE : HAS OE NUMBER 22250-74240							
HOLDEN		APOLLO	JL	4 CYL	2.0	3SFE	1989 - 1993	AM74140 AM74240	
		NOTE : HAS OE NUMBER 22250-74140 NOTE : HAS OE NUMBER 22250-74240							
HOLDEN		APOLLO	JM-JP	6 CYL		3VZFE	1993 - 1995	AM62070	
HOLDEN		ASTRA	TR	4 CYL	1.8	C18SEL	2/1998 - 9/2000	AM9150	AM9150N
HOLDEN		ASTRA	TR	4 CYL	2.0	X20XEV	1996 - 1998	AM9150	AM9150N
HOLDEN		ASTRA	TS	4 CYL	1.8	X18XE -Z18XE	10/1998 - 12/2006	AM9606	AM9606N
HOLDEN		ASTRA	TS	4 CYL	2.0	Z20LET	2002 - 2004		AM83BOSN
HOLDEN		ASTRA	AH	4 CYL	1.8	Z18XE	1/2004 - 3/2007	AM9606	AM9606N
HOLDEN		BARINA	XC	4 CYL	1.8	Z18XE	1/2001 - 12/2005	AM9606	AM9606N
HOLDEN	TURBO	CALIBRA	YE	4 CYL	2.0	C20LET	9/1991 - 10/1997	AM3024	



AM9606



AMAFH60



AM74140



AM9150



**Cant Find the Air Mass Meter your looking for?**  
 Please contact Injectronics on 03 8792 6999 or NZ 0800 536 547  
 or search online @ [www.injectronics.com.au](http://www.injectronics.com.au)

Make	Model	Series	Cyl	Engine Size	Engine type	Year	Remanufactured Change over	NEW OEM Complete Assy	NEW OEM Insert Only
<b>HOLDEN continued</b>									
HOLDEN	CALIBRA	YE	4 CYL	2.0	C20NE	9/1991 - 10/1997	AM2208		
HOLDEN	CALIBRA	YE	4 CYL	2.0	C20XE	1991 - 1995	AM2015		
HOLDEN	CALIBRA	YE	4 CYL	2.0	X20XEV	1991 - 1997	AM9150	AM9150N	
HOLDEN	CALIBRA	YE	6 CYL	2.5	C25XE	9/1991 - 10/1997	AM7519	AM7519N	
HOLDEN	CAMIRA	JD	4 CYL	1.8		1984 - 1986	AM2074		
HOLDEN	COMBO	XC	4 CYL	1.8	Z18XE	1/2002 - 12/2006	AM9606	AM9606N	
HOLDEN	COMMODORE	VK	6 CYL	3.3		1984 - 1986	AM2052		
HOLDEN	COMMODORE	VL	6 CYL	3.0	RB30	2/1986 - 8/1988	AM2008		
HOLDEN	COMMODORE	VS UTE	8 CYL	5.0		12/1998 - 7/2000	AM9556	AM9556N	
HOLDEN <i>INC SUPER CHARGED</i>	COMMODORE	VS VT VX VY	6 CYL	3.8		5/1995 - 7/2004	AM9556	AM9556N	
HOLDEN <i>INC SUPER CHARGED</i>	COMMODORE	VS VT	8 CYL	5.0		5/1995 - 7/2004	AM9556	AM9556N	
HOLDEN	COMMODORE	VT VX VY	8 CYL	5.7	GEN III LS1	6/1999 - 7/2004	AM8988	AM8988N	
HOLDEN	COMMODORE	VZ	6 CYL	3.6	6G1	7/2004 - 2/2008	AM8115	AM8115N	
HOLDEN	COMMODORE	VZ	8 CYL	6.0	GEN 4 LS2	2006 - 2007		AM8491N	
HOLDEN	COMMODORE	VZ	8 CYL	6.0	GEN 4 L76	2006 - 2007		AM4689N	
HOLDEN	COMMODORE	VZ	8 CYL	5.7	GEN III	7/2004 - 2006		AM8491N	
HOLDEN	COMMODORE	VE	6 CYL	3.6	6G1	3/2008 -	AM8177	AM8177N	
HOLDEN	COMMODORE	VE	8 CYL	6.0	GEN 4, LS2	2006 - 2008		AM4689N	
HOLDEN	COMMODORE	VE	8 CYL	6.0	L76	2008 - 2010		AM4689N	
HOLDEN	COMMODORE	VE	8 CYL	6.0	L98	2007 - 2010		AM4689N	
HOLDEN	FRONTERA	UT	4 CYL	2.0	X20SE	1/1995 - 3/1999		AM7003N	
HOLDEN	FRONTERA	MX	6 CYL	3.2	6VD1	1998 - 2003	AM8461		
HOLDEN	JACKAROO	UBS17	4 CYL	2.6	4ZE1	1987 - 1992	AM0001		
HOLDEN	JACKAROO	L8-U8	6 CYL	3.5	6VE1	1997 - 2004	AM8461		
HOLDEN <i>TURBO</i>	RODEO	RA	4 CYL	3.0	4JH1T	1999 - 2007	AM2537	AM2537N	
HOLDEN	RODEO	RA	6 CYL	3.5	6VE1	2002 - 2006	AM3950		AM3950N
HOLDEN	RODEO	RA	6 CYL	3.6	HF6CYL	2005 - 2007	AM8115	AM8115N	
HOLDEN <i>LOW TORQUE</i>	RODEO	TF	4 CYL	2.6	4ZE1	1988 - 1992	AM0001		



AM2208



AM2015



AM8177



AM4689



AM9556



AM2052



AM8115



AM0001



AM8988



AM8115

Cant Find the Air Mass Meter your looking for?  
 Please contact Injectronics on 03 8792 6999 or NZ 0800 536 547  
 or search online @ [www.injectronics.com.au](http://www.injectronics.com.au)

Make	Model	Series	Cyl	Engine Size	Engine type	Year	Remanufactured Change over	NEW OEM Complete Assy	NEW OEM Insert Only
<b>HOLDEN continued</b>									
<b>HOLDEN HIGH TORQUE</b>	RODEO	TF	4 CYL	2.6	4ZE1	1993 - 1998	<b>AM0002</b>	<b>AM0002N</b>	
<b>HOLDEN</b>	RODEO	TF	6 CYL	3.2	6VD1	1997 - 2003	<b>AM1180</b>		<b>AM1180N</b>
<b>HOLDEN INC SUPERCHARGED</b>	STATESMAN	VS WH WK	6 CYL	3.8		5/1995 - 7/2004	<b>AM9556</b>	<b>AM9556N</b>	
<b>HOLDEN</b>	STATESMAN	WH-WK	8 CYL	5.7	GEN 3	6/1999 - 7/2004	<b>AM8988</b>	<b>AM8988N</b>	
<b>HOLDEN</b>	STATESMAN	WH-WK	6 CYL	3.8		6/1999 - 7/2004	<b>AM9556</b>	<b>AM9556N</b>	
<b>HOLDEN</b>	STATESMAN	WL	6 CYL	3.6	HF6 CYL	2004 - 2006	<b>AM8115</b>	<b>AM8115N</b>	
<b>HOLDEN</b>	STATESMAN	WL	8 CYL	5.7	GEN 3	2004 - 2006		<b>AM8491N</b>	
<b>HOLDEN</b>	STATESMAN	WL	8 CYL	6.0	GEN 4	2004 - 2006		<b>AM8491N</b>	
<b>HOLDEN</b>	STATESMAN	WL	8 CYL	6.0	L76	2005 - 2006		<b>AM4689N</b>	
<b>HOLDEN</b>	SUBURBAN		8 CYL	5.7	L31	1998 - 1999	<b>AM8988</b>	<b>AM8988N</b>	
<b>HOLDEN</b>	TIGRA		4 CYL	1.8	Z18XE	2005 - 2007	<b>AM9606</b>	<b>AM9606N</b>	
<b>HOLDEN UP TO E/NO V599999</b>	VECTRA	JR	6 CYL	2.5	X25XE	6/1997 - 7/1998	<b>AM7503</b>	<b>AM7503N</b>	
<b>HOLDEN</b>	VECTRA	JR - JS	4 CYL	2.0	C20SEL - C22SEL	1997 - 2000	<b>AM9150</b>	<b>AM9150N</b>	
<b>HOLDEN FROM E/NO W5000001</b>	VECTRA	JR - JS	6 CYL	2.5	X25XE	1999 - 2003	<b>AM7519</b>	<b>AM7519N</b>	
<b>HOLDEN</b>	VECTRA	JS SERIES II	6 CYL	2.6	Y26E	2000 - 2003	<b>AM2184</b>	<b>AM2184N</b>	<b>AM83BOSN</b>



AM0002



AM1180



AM8115



AM7519



AM9556



AM9606



AM9150



AM8988

Cant Find the Air Mass Meter your looking for?  
 Please contact Injectronics on 03 8792 6999 or NZ 0800 536 547  
 or search online @ www.injectronics.com.au

Make	Model	Series	Cyl	Engine Size	Engine type	Year	Remanufactured Change over	NEW OEM Complete Assy	NEW OEM Insert Only
<b>HYUNDAI</b>									
HYUNDAI	ACCENT		4 CYL	1.6	G4ED	2003 - 2006		AM3700N	
HYUNDAI	ELANTRA		4 CYL	2.0	G4GC	6/2003 - 5/2006		AM3700N	
HYUNDAI	EXCEL	X2	4 CYL	1.5	G4DJ	1990 - 1994	AMKV02		
HYUNDAI	EXCEL	X3	4 CYL	1.5	G4EK	1994 - 1997	AM7102	AM7102N	
HYUNDAI	GRANDEUR	TG	6 CYL	3.0	G6CT	1999 - 2004	AM8029	AM8029N	AM82BOSN
HYUNDAI	GRANDEUR	TG	6 CYL	3.8	G6DA	2005 - 2011		AMC100N	
HYUNDAI	GRANDEUR	XG	6 CYL	3.5	G6CU	11/2002 - 10/2005	AM8090	AM8090N	
HYUNDAI	LANTRA	J1	4 CYL	1.6	G4CR	10/1990 - 4/1995	AMKV02		
HYUNDAI	LANTRA	J1	4 CYL	1.6	G4CN	6/1992 - 4/1995	AMKV05		
HYUNDAI	S COUPE	SLC	4 CYL	1.5	G4DJ	2/1990 - 6/1992	AMKV03	AMKV03N	
HYUNDAI	S COUPE	SLC	4 CYL	1.5	G4EKM	7/1992 - 4/1995	AM7102	AM7102N	
HYUNDAI	S COUPE	SLC	4 CYL	1.5	G4EK-T	7/1992 - 4/1995	AM2024		
HYUNDAI	SANTA FE		4 CYL	2.4	G4JS	9/2000 - 7/2001	AM8020	AM8020N	
HYUNDAI	SANTA FE		4 CYL	2.4	G4JS	8/2001 - 11/2005		AM2447N	AM83BOSN
HYUNDAI	SANTA FE		6 CYL	2.7	G6BA	9/2000 - 11/2005		AM7200N	
HYUNDAI	SANTA FE		6 CYL	2.7	G6BA	12/2005 - 5/2005		AMC100N	
HYUNDAI	SONATA		4 CYL	2.0	G4CP	9/1989 - 12/1999		AM3110N	
HYUNDAI	SONATA		4 CYL	2.0	G4CP	9/1989 - 12/1999	AMKV04	AMKV04N	
HYUNDAI	SONATA		4 CYL	2.0	G4JP	5/2000 - 3/2001		AM7200N	
HYUNDAI	SONATA		4 CYL	2.4	G4CS	8/1989 - 1993	AMKV02		
HYUNDAI	SONATA		4 CYL	2.4	G4JS	4/2001 - 12/2002	AM8020	AM8020N	
HYUNDAI	SONATA		4 CYL	2.4	G4JS	12/2002 - 11/2003		AM2447N	AM83BOSN
HYUNDAI	SONATA		6 CYL	2.5	G6AV	5/1998 - 3/2001	AM9626	AM9626N	
HYUNDAI	SONATA		6 CYL	2.5	G6BV	1998 - 2000	AM9626	AM9626N	
HYUNDAI	SONATA		6 CYL	2.7	G6BA	4/2001 - 11/2004		AM7200N	
HYUNDAI	SONATA		6 CYL	3.0	G6AT	1993 - 4/1998	AMKV03	AMKV03N	
HYUNDAI	SONATA		6 CYL	3.3	G6DB	3/2005 - 5/2008		AMC100N	
HYUNDAI	TERRACAN		6 CYL	3.5	G6CU	7/2001 - 10/2006	AM8090	AM8090N	
HYUNDAI	TIBURON		4 CYL	2.0	G4GC	9/2001 - 9/2006		AM3700N	
HYUNDAI	TIBURON		6 CYL	2.7	G6BA	9/2001 - 2/2006		AM7200N	
HYUNDAI	TRAJET		6 CYL	2.7	G6BA	3/2000 - 4/2007		AM7200N	
HYUNDAI	TUCSON		4 CYL	2.0	G4GC	2005 - 2007		AM3700N	
HYUNDAI	TUCSON		6 CYL	2.7	G6BA	2004 - 2007		AM7200N	



AM7102



AM8090



AM9626



AM7200



AMKV02



AMKV03



AM8020



AM3700

**Cant Find the Air Mass Meter your looking for?**  
 Please contact Injectronics on 03 8792 6999 or NZ 0800 536 547  
 or search online @ [www.injectronics.com.au](http://www.injectronics.com.au)

Make	Model	Series	Cyl	Engine SIZE	Engine type	Year	Remanufactured Change over	NEW OEM Complete Assy	NEW OEM Insert only
<b>JAGUAR</b>									
JAGUAR	XJ40		4 CYL	3.6		1987 - 1994	AM0021	AM0021N	
JAGUAR	XJ40		4 CYL	3.6		1987 - 1994	AM1057		
JAGUAR	XJ40		4 CYL	4.0		1987 - 1994	AM0021	AM0021N	
JAGUAR	XJ6		6 CYL	4.2		1979 - 1986	AMX3006		
JAGUAR	XJ6-XJS		6 CYL	4.0	AJ6-AJ16	1995 - 1997	AM20AM	AM20AMN	
<b>JEEP</b>									
JEEP	CHEROKEE		4 CYL	2.8	ENR	2005 - 2007			AMAFH7049N
JEEP	CHEROKEE		4 CYL	2.8	ENS	2008 - 2010			AMAFH7049N
JEEP	WRANGLER		4 CYL	2.8	ENS	2007 - 2010			AMAFH7049N
<b>KIA</b>									
KIA	CARENS		4 CYL	1.8	T8-D	4/1999 - 4/2002	AM7105	AM7105N	
KIA	CARNIVAL	UP	6 CYL	2.5	K5	11/1998 - 2/2007	AM9626	AM9626N	
KIA	CARNIVAL	VQ	6 CYL	2.7	G6EA	2005 - 2010		AMC100N	
KIA	CERATO		4 CYL	2.0	G4GC	2/2004 - 9/2006		AM3700N	
KIA	GRAND CARNIVAL	VQ	6 CYL	3.8	G6DA	11/2005 - 6/2010		AMC100N	
KIA	MAGENTIS		6 CYL	2.7	G6EA	2005 - 2007		AMC100N	
KIA	OPTIMA		4 CYL	2.4	G4KC	8/2002 - 9/2005		AM2447N	AM83BOSN
KIA	OPTIMA		6 CYL	2.5	G6BV	2/2001 - 5/2001		AM7200N	
KIA	OPTIMA		6 CYL	2.7	G6BA	6/2001 - 9/2005		AM7200N	
KIA	RIO	JB	4 CYL	1.4	G4EE	2007 - 2010		AM3700N	
KIA	RIO	JB	4 CYL	1.6	G4ED	2005 - 2011		AM3700N	
KIA	SHUMA	FB	4 CYL	1.8	T8-D	5/2000 - 1/2001	AM7105	AM7105N	
KIA	SORENTO	BL	6 CYL	3.3	G6DB	10/2006 - 2009		AMC100N	
KIA	SORENTO	BL	6 CYL	3.5	G6CU	2002 - 2006	AM8090	AM8090N	
KIA	SORENTO	BL	6 CYL	3.8	G6DA	2006 - 2008		AMC100N	
KIA	SPECTRA	FB	4 CYL	1.8	T8-D	2/2001 - 2/2004	AM7105	AM7105N	
KIA	SPORTAGE		4 CYL	2.0	FE	12/1996 - 2/1998			AM79BOSN
KIA	SPORTAGE		4 CYL	2.0	FE	12/1996 - 2/1998	AM9626	AM9626N	
KIA	SPORTAGE		4 CYL	2.0	FE	3/1998 - 12/2003	AM7105	AM7105N	
KIA	SPORTAGE		4 CYL	2.0	G4GC	8/2004 - 8/2006		AM3700N	
KIA	SPORTAGE		6 CYL	2.7	G6BA	2005 - 2009		AM7200N	



AM0021



AM20AM



AM7105



AM8090



AM9626



AM3700



AMC100N



AM7200N

Cant Find the Air Mass Meter your looking for?  
 Please contact Injectronics on 03 8792 6999 or NZ 0800 536 547  
 or search online @ [www.injectronics.com.au](http://www.injectronics.com.au)

Make	Model	Series	Cyl	Engine SIZE	Engine type	Year	Remanufactured Change over	NEW OEM Complete Assy	NEW OEM Insert only
<b>LAND ROVER</b>									
LAND ROVER DIESEL	DEFENDER	TD5	5 CYL	2.5		1987 - 2006	AM9607	AM9607N	
LAND ROVER	DISCOVERY	SERIES 2	8 CYL	4.0		1998 - 2004	AM7532	AM7532N	AM75BOSN
LAND ROVER	DISCOVERY	SERIES 2	8 CYL	4.6		1998 - 2004	AM7532	AM7532N	AM75BOSN
LAND ROVER TURBO DIESEL	DISCOVERY		5 CYL	2.5		1998 - 2004	AM9607	AM9607N	
LAND ROVER	DISCOVERY		8 CYL	3.5		1989 - 1998	AM0022	AM0022N	
LAND ROVER	DISCOVERY		8 CYL	3.9		1989 - 1998	AM0022	AM0022N	
LAND ROVER	DISCOVERY		8 CYL	4.0		1989 - 1998	AM0022	AM0022N	
LAND ROVER	DISCOVERY		8 CYL	4.0		1998 - 2004	AM7532	AM7532N	AM75BOSN
LAND ROVER	FREELANDER	TD4	4 CYL	2.0	M47	2000 - 2006			AM98BOSN
LAND ROVER	FREELANDER		4 CYL	2.0	L SERIES	1996 - 2003			AM22BOSN
<b>LEXUS</b>									
LEXUS	ES300	MCV10	6 CYL	3.0	1MZFE	8/1994 - 8/1996	AM20020		
LEXUS	ES300	MCV20	6 CYL	3.0	1MZFE	8/1996 - 7/2001	AM20010	AM20010N	
LEXUS	ES300	MCV30	6 CYL	3.0	1MZFE	7/2001 - 3/2006	AMZL01		AMZL01N
LEXUS	ES300	VCV10	6 CYL	3.0	3VZ FE	1991 - 1996	AM62040		
LEXUS	GS300	JZS160	6 CYL	3.0	2JZGE	8/1997 - 7/2000	AM20010	AM20010N	
LEXUS	GS300	JZS160	6 CYL	3.0	2JZGE	7/2000 - 1/2006	AMZL01		AMZL01N
LEXUS	GS430	UZS190	8 CYL	4.3	3UZFE	2005 - 2006	AMZL01		AMZL01N
LEXUS	GS450	GWS191	6 CYL	3.5	2GRFSE	2005 - 2006	AMZL01		AMZL01N
LEXUS	IS250	GSE20	6 CYL	2.5	4GRFSE	2005 - 2006	AMZL01		AMZL01N
LEXUS	IS250	GSE20	6 CYL	2.5	4GRFSE	2007 - 2011	AMTL01		AMTL01N
LEXUS	RX350	GSU35	6 CYL	3.3	3MZFE	2007 - 2011	AMTL01		AMTL01N
LEXUS	IS300	JCE10	6 CYL	3.0	2JZGE	2001 - 2005	AMZL01		AMZL01N
LEXUS	LS400	UCF20	8 CYL	4.0	1UZFE	7/1997 - 8/2000	AM20010	AM20010N	
LEXUS	LS430	UCF30	8 CYL	4.3	3UZFE	2000 - 2006	AMZL01		AMZL01N
LEXUS	LX470	UZJ100	8 CYL	4.7	2UZFE	1998 - 2008	AM75020	AM75020N	
LEXUS	RX330	MCU38	6 CYL	3.3	3MZFE	2/2003 - 1/2006	AMZL01		AMZL01N
LEXUS	RX400	MHU38	6 CYL	3.3	3MZFE	2005 - 2006	AMZL01		AMZL01N
LEXUS	SC300	JZZ31	6 CYL	3.0	2JZ	9/1997 - 8/2000	AM20010	AM20010N	
LEXUS	SC400	UZZ30	8 CYL	4.0	1UZFE	9/1997 - 8/2000	AM20010	AM20010N	



AM20AM



AM0022



AM20010



AM8010



AMTL01



AM9607

**Cant Find the Air Mass Meter your looking for?**  
**Please contact Injectronics on 03 8792 6999 or NZ 0800 536 547**  
**or search online @ [www.injectronics.com.au](http://www.injectronics.com.au)**

Make	Model	Series	Cyl	Engine SIZE	Engine type	Year	Remanufactured Change over	NEW OEM Complete Assy	NEW OEM Insert only
<b>MAZDA</b>									
MAZDA	3	BK	4 CYL	2.3	L3	2002 - 2009	AMZL01		AMZL01N
MAZDA	3	BK	4 CYL	2.0	LF	2003 - 2009	AMZL01		AMZL01N
MAZDA	6	GG	4 CYL	2.0	LF	2002 - 2007	AMZL01		AMZL01N
MAZDA	6	GG-GY	4 CYL	2.0	RF	2005 - 2008	AMZL01		AMZL01N
MAZDA	6	GY	4 CYL	2.3	L3	2002 - 2007	AMZL01		AMZL01N
MAZDA	121	DB	4 CYL	1.3	B3	10/1990 - 9/1996	AMAFH38	AMAFH38N	
MAZDA	121	DB	4 CYL	1.5	B5	10/1990 - 9/1996	AMAFH38	AMAFH38N	
MAZDA	121	DW	4 CYL	1.3	B3	10/1996 - 12/2002	AMB3H7	AMB3H7N	
MAZDA	121	DW	4 CYL	1.3	B3	1/2000 - 12/2002	AMB34M	AMB34MN	
MAZDA	121	DW	4 CYL	1.5	B5	10/1996 - 12/2002	AMB3H7	AMB3H7N	
MAZDA	121	DW	4 CYL	1.5	B5	1/2000 - 12/2002	AMB34M	AMB34MN	
MAZDA	323	BA	4 CYL	1.6	B6	4/1994 - 4/1998	AMB3H7	AMB3H7N	
MAZDA	323	BA	4 CYL	1.8	BP	4/1994 - 4/1998	AMB6BF		
MAZDA	323	BA	4 CYL	2.0	KF	4/1994 - 4/1998	AMB6BF		
MAZDA	323	BF	4 CYL	1.6	B6	1986 - 1989	AMB630		
MAZDA	323	BF	4 CYL	1.8	BP	1986 - 1989	AMB6BF		
MAZDA	323	BG	4 CYL	1.8	BP	1989 - 1994	AMB6S7		
MAZDA	323	BG	4 CYL	1.8	BP	1989 - 1994	AMB6S7		
MAZDA	323	BG	4 CYL	1.8	BP	1989 - 1994	AMB6S7		
MAZDA	323	BJ	4 CYL	1.6	ZMD	5/1998 - 9/2000	AMZL01		AMZL01N
MAZDA	323	BJ	4 CYL	1.8	FP	5/1998 - 12/2003	AMFP39	AMFP39N	
MAZDA	323	BJ	4 CYL	2.0	FS	10/2000 - 12/2003	AMFS1E		



AMZL01



AMB3H7



AMFP39



AMB630



AMB34M



AMB6BF

**Cant Find the Air Mass Meter your looking for?**  
**Please contact Injectronics on 03 8792 6999 or NZ 0800 536 547**  
**or search online @ [www.injectronics.com.au](http://www.injectronics.com.au)**

Make	Model	Series	Cyl	Engine SIZE	Engine type	Year	Remanufactured Change over	NEW OEM Complete Assy	NEW OEM Insert only
<b>MAZDA continued</b>									
MAZDA	626	GD	4 CYL	2.2	F2	1991 - 1994	AMF201		
MAZDA	626	GE	4 CYL	2.0	FS	1992 - 1994	AMB577		
MAZDA	626	GE	6 CYL	2.5	KL	1991 - 1997	AMKL02		
MAZDA	626	GF	4 CYL	2.0		1998 - 2002	AMAFH6014		
MAZDA	929	HB	4 CYL	2.0	FE	1983 - 1985	AM02630		
MAZDA	929	HC	6 CYL	3.0	JE	1987 - 1991	AMJE06		
MAZDA	929	HC	6 CYL	3.0	JE	1987 - 1991	AMJE28		
MAZDA	929	HD	6 CYL	3.0	JE	1990 - 1995	AMJE50		
MAZDA HAS 5 PIN PLUG	B SERIES	B2600	4 CYL	2.6	G6	1990 - 1998	AM0011		
MAZDA HAS 6 PIN PLUG	B SERIES	B2600	4 CYL	2.6	G6	1990 - 1998	AM0012		
MAZDA HAS 3 PIN PLUG	B SERIES	B2600	4 CYL	2.6	G6	1999 - 2006	AMFP39	AMFP39N	
<b>LPG SPECIAL APPLICATION ( has higher resistance to back fire)</b>								AMFP39BOS	
MAZDA TURBO & NON TURBO	B2500		4 CYL	2.5	WL	1999 - 2006	AMZL01		AMZL01N
MAZDA	B4000		6 CYL	4.0	14V	2005 - 2006			AM9636N
MAZDA HAS 5 PIN PLUG	BRAVO		4 CYL	2.6	G6	1990 - 1998	AM0011		
MAZDA HAS 6 PIN PLUG	BRAVO		4 CYL	2.6	G6	1990 - 1998	AM0012		
MAZDA HAS 3 PIN PLUG	BRAVO		4 CYL	2.6	G6	1999 - 2006	AMFP39	AMFP39N	
<b>LPG SPECIAL APPLICATION ( has higher resistance to back fire)</b>								AMFP39BOS	
MAZDA TURBO DIESEL	BT50		4 CYL	2.5		2006 - 2010			AMWLS1N
MAZDA TURBO DIESEL	BT50		4 CYL	3.0		2006 - 2010			AMWLS1N
MAZDA	MPV	LW	4 CYL	2.0	FS	6/1999 - 2/2002	AMFS1E		
MAZDA	MPV	LW	4 CYL	2.5	GY	1999 - 2002	AM7021	AM7021N	
MAZDA	MPV	LW	4 CYL	2.3	L3	2002 - 2007	AMZL01		AMZL01N
MAZDA	MPV	LW	6 CYL	3.0	AJ	2002 - 2006	AM7021	AM7021N	
MAZDA	MX5	NA	4 CYL	1.6	B6ZE	1989 - 1997	AMB6BF		
MAZDA	MX5	NA	4 CYL	1.8	BP	9/1993 - 12/1997	AMB6BF		
MAZDA	MX5	NB	4 CYL	1.8	BP	1/1998 - 8/2000	AMFP39	AMFP39N	
MAZDA TURBO	MX5	NB	4 CYL	1.8	BPT	9/2000 - 7/2005	AMFS1E		
MAZDA	MX5	NC	4 CYL	2.0	LFDE	9/2005 - 2009	AMZL01		AMZL01N
MAZDA	MX6	GD	4 CYL	2.2	F2T	1987 - 1991	AMF201		



AM0011



AMAFP39



AMB6BF



AMFP39BOS



AM7021



AMZL01

**Cant Find the Air Mass Meter your looking for?**  
 Please contact Injectronics on 03 8792 6999 or NZ 0800 536 547  
 or search online @ [www.injectronics.com.au](http://www.injectronics.com.au)

Make	Model	Series	Cyl	Engine SIZE	Engine type	Year	Remanufactured Change over	NEW OEM Complete Assy	NEW OEM Insert only
<b>MAZDA continued</b>									
MAZDA	MX6	GE	4 CYL	2.0	KF	1992 - 1994	AMB577		
MAZDA	MX6	GE	6 CYL	2.5	KL	1991 - 1997	AMKL02		
MAZDA	PREMACY	CP	4 CYL	1.8	FP	3/1999 - 7/2003	AMFP39	AMFP39N	
MAZDA	PREMACY	CP	4 CYL	2.0	FS	7/2001 - 7/2003	AMFP39	AMFP39N	
MAZDA	RX7		ROTARY	1.3		1985 - 1991	AMN326		
MAZDA <i>TURBO</i>	RX7		ROTARY	1.3		1985 - 1991	AMN318		
MAZDA	RX7		ROTARY	1.3		1991 - 1999	AM0020		
MAZDA	RX8		4 CYL	1.3	138B	4/2003 - 2007	AMZL01		AMZL01N
MAZDA	TRIBUTE	YU-6Z-8Z	6 CYL	3.0	AJ	2000 - 2006	AMXF2F		
MAZDA	TRIBUTE	5Z-CU	4 CYL	2.3	L3	1/2004 - 1/2008	AMZL01		AMZL01N
<b>MERCEDES BENZ</b>									
MERCEDES BENZ	220	W124	4 CYL	2.2	M111.960	9/1992 - 6/1993	AM7100	AM7100N	AM71BOSN
MERCEDES BENZ	300	W124	6 CYL	2.8	M104.942	9/1989 - 6/1993	AM7500	AM7500N	
MERCEDES BENZ	320	W124	6 CYL	3.2	M104.992	9/1992 - 6/1993	AM7500	AM7500N	
MERCEDES BENZ	300SE		6 CYL	3.2	M104.990	1991 - 1993	AM3019		
MERCEDES BENZ <i>Customers own unit repair only</i>	A CLASS	W168	4 CYL			1997 - 2005	AM4009		
MERCEDES BENZ	C180	W202	4 CYL	1.8	M111.920	5/1996 - 2/2001	AM7100	AM7100N	AM71BOSN
MERCEDES BENZ	C180	W202	4 CYL	1.8	M111.920	3/1993 - 8/1995	AM7100	AM7100N	AM71BOSN
MERCEDES BENZ	C180	W202	4 CYL	1.8	M111.921	9/1995 - 4/2000	AM7114	AM7114N	AM75BOSN
MERCEDES BENZ	C180	W203	4 CYL	1.8	M271.946	5/2002 -		AM9638N	
MERCEDES BENZ	C180 KOMP	W203	4 CYL	2.0	M271.940	9/2002 -	AM4004	AM4004N	
MERCEDES BENZ	C200	W202	4 CYL	2.0	M111.941	9/1996 - 2/2001	AM7100	AM7100N	AM71BOSN
MERCEDES BENZ	C200	W202	4 CYL	2.0	M111.941	1/1994 - 4/2000	AM7100	AM7100N	AM71BOSN
MERCEDES BENZ <i>DIESEL</i>	C200	W203	4 CYL	1.8	M611.962	2000 - 2003			AM0048N
MERCEDES BENZ <i>S/CHARGED</i>	C200 KOMP	W203	4 CYL	1.8	M271.940	5/2002 -		AM9638N	
MERCEDES BENZ	C200 KOMP	W203	4 CYL	2.0	M111.955	5/2000 - 8/2002		AM9613N	
MERCEDES BENZ	C220	W202	4 CYL	2.2	M111.961	3/1993 - 9/1996	AM7100	AM7100N	AM71BOSN
MERCEDES BENZ	C220	W203	4 CYL	2.2	M611.962	5/2000 - 2/2002			AM0048N
MERCEDES BENZ	C230	W202	4 CYL	2.3	M111.974	9/1996 - 5/1997	AM7114	AM7114N	AM75BOSN
MERCEDES BENZ <i>S/CHARGED</i>	C230	W203	4 CYL	1.8	M271.948	2/2004 - 5/2005		AM9638N	



AMZL01



AMFP39



AM7114



AM7100



AM9638



AM7500



**Cant Find the Air Mass Meter your looking for?**  
**Please contact Injectronics on 03 8792 6999 or NZ 0800 536 547**  
**or search online @ [www.injectronics.com.au](http://www.injectronics.com.au)**

Make	Model	Series	Cyl	Engine SIZE	Engine type	Year	Remanufactured Change over	NEW OEM Complete Assy	NEW OEM Insert only
<b>MERCEDES continued</b>									
MERCEDES BENZ	C240	W202	6 CYL	2.4	M112.910	6/1997 - 2/2001	AM7515	AM7515N	AM75BOSN
MERCEDES BENZ	C240	W203	6 CYL	2.6	M112.912	5/2000 -	AM7515	AM7515N	AM75BOSN
MERCEDES BENZ	C240	W203	6 CYL	2.6	M112.916	9/2002 -	AM7515	AM7515N	AM75BOSN
MERCEDES BENZ <i>DIESEL</i>	C250	W202	5 CYL	2.5	M605.960	9/1995 - 4/2000	AM7114	AM7114N	AM75BOSN
MERCEDES BENZ	C280	W202	6 CYL	2.8	M104.941	5/1993 - 5/1997	AM7500	AM7500N	
MERCEDES BENZ	C280	W202	6 CYL	2.8	M112.920	6/1997 - 4/2000	AM7515	AM7515N	AM75BOSN
MERCEDES BENZ	C320	W203	6 CYL	3.2	M112.946	5/2000 -	AM7515	AM7515N	AM75BOSN
MERCEDES BENZ	C320	W203	6 CYL	3.2	M112.946 / 953	9/2002 -	AM7515	AM7515N	AM75BOSN
MERCEDES BENZ	C36	W206	6 CYL	3.6	M104.941	1/1994 - 5/1997	AM7500	AM7500N	
MERCEDES BENZ	C43 AMG	W202	8 CYL	4.3	M113.944	11/1997 - 4/2000	AM7810	AM7810N	AM75BOSN
MERCEDES BENZ	C55 AMG	W203	8 CYL	5.4	M113.988	2/2004 -	AM7810	AM7810N	AM75BOSN
MERCEDES BENZ	CL500	W215	8 CYL	5.0	M113.960	9/1999 -	AM7810	AM7810N	AM75BOSN
MERCEDES BENZ	CL55 AMG	W215	8 CYL	5.4	M113.986	9/1999 - 8/2002	AM7810	AM7810N	AM75BOSN
MERCEDES BENZ	CL600	W215	V12	5.8	M137.970	9/1999 - 8/2002			AM75BOSN
MERCEDES BENZ	CLK 200 KOMP	W208	4 CYL	2.0	M111.956	6/2000 - 6/2002		AM9613N	
MERCEDES BENZ	CLK 240	W209	6 CYL	2.6	M112.912	5/2002 -	AM7515	AM7515N	AM75BOSN
MERCEDES BENZ	CLK 320	W209	6 CYL	3.2	M112.955	5/2002 -	AM7515	AM7515N	AM75BOSN
MERCEDES BENZ	CLK 500	W209	8 CYL	5.0	M113.968	5/2002 -	AM7810	AM7810N	AM75BOSN
MERCEDES BENZ	CLK 55	W209	8 CYL	5.4	M113.987	9/2002 -	AM7810	AM7810N	AM75BOSN
MERCEDES BENZ	CLK200	W208	4 CYL	2.0	M111.945	6/1997 - 6/2000	AM7114	AM7114N	AM75BOSN
MERCEDES BENZ	CLK230	W208	4 CYL	2.3	M111.975	6/1997 - 6/2000	AM7114	AM7114N	AM75BOSN
MERCEDES BENZ	CLK320	W208	6 CYL	3.2	M112.940	6/1998 - 1/2003	AM7515	AM7515N	AM75BOSN
MERCEDES BENZ	CLK430	W208	8 CYL	4.3	M113.943	8/1998 - 1/2003	AM7810	AM7810N	AM75BOSN
MERCEDES BENZ	CLS500	W219	8 CYL	5.0	M113.967	6/2004 -	AM7810	AM7810N	AM75BOSN
MERCEDES BENZ	CLS55	219	8 CYL	5.4	M113.990	1/2005 - 5/2006	AM7810	AM7810N	AM75BOSN
MERCEDES BENZ <i>SUPERCHARGED</i>	CLS55 AMG	W219	8 CYL	5.4	M113.990	1/2005 - 3/2006	AM7810	AM7810N	AM75BOSN
MERCEDES BENZ	E200 KOMP	W210	4 CYL	2.0	M111.957	8/2000 - 3/2002		AM9613N	



AM7515



AM7114



AM7500



AM7810



AM7515



AM9613

Cant Find the Air Mass Meter your looking for?  
 Please contact Injectronics on 03 8792 6999 or NZ 0800 536 547  
 or search online @ [www.injectronics.com.au](http://www.injectronics.com.au)

Make	Model	Series	Cyl	Engine SIZE	Engine type	Year	Remanufactured Change over	NEW OEM Complete Assy	NEW OEM Insert only
<b>MERCEDES continued</b>									
MERCEDES BENZ	E200	W211	4 CYL	1.8	M271.941	3/2002 - 3/2006		AM9638N	
MERCEDES BENZ	E220	W214	4 CYL	2.2	M111.960	7/1993 - 6/1998	AM7100	AM7100N	AM71BOSN
MERCEDES BENZ	E230	W210	4 CYL	2.3	M111.970	6/1995 - 8/1997	AM7100	AM7100N	AM71BOSN
MERCEDES BENZ	E230	W210	4 CYL	2.3	M111.970	6/1995 - 8/1997	AM7114	AM7114N	AM75BOSN
MERCEDES BENZ	E240	W210	6 CYL	2.4	M112.91	9/1997 - 1/2003	AM7515	AM7515N	AM75BOSN
MERCEDES BENZ	E240	W211	6 CYL	2.6	M112.913	3/2002 -	AM7515	AM7515N	AM75BOSN
MERCEDES BENZ DIESEL	E270 CDI	W210	4 CYL	2.7	M612.961	6/1999 - 3/2002			AM0048N
MERCEDES BENZ	E280	W124	6 CYL	2.8	M104.992	3/1994 - 6/1998	AM7500	AM7500N	
MERCEDES BENZ	E280	W210	6 CYL	2.8	M112.921	6/1995 - 1/2003	AM7515	AM7515N	AM75BOSN
MERCEDES BENZ	E320	W124	6 CYL	3.2	M104.992	4/1993 - 6/1998	AM7500	AM7500N	
MERCEDES BENZ	E320	W210	6 CYL	3.2	M104.992	6/1995 - 2/1997	AM7500	AM7500N	
MERCEDES BENZ	E320	W210	6 CYL	3.2	M112.941	3/1997 - 6/1999	AM7515	AM7515N	AM75BOSN
MERCEDES BENZ	E320	W211	6 CYL	3.2	M112.949	3/2002 - 2005	AM7515	AM7515N	AM75BOSN
MERCEDES BENZ	E36	W124	6 CYL	3.6	M104.992	3/1994 - 6/1998	AM7500	AM7500N	
MERCEDES BENZ	E430	W210	8 CYL	4.3	M113.940	9/1997 - 3/2002	AM7810	AM7810N	AM75BOSN
MERCEDES BENZ	E500	W211	8 CYL	5.0	M113.967	3/2002 - 2006	AM7810	AM7810N	AM75BOSN
MERCEDES BENZ	E55	W210	8 CYL	5.5	M113.980	9/1997 - 3/2003	AM7810	AM7810N	AM75BOSN
MERCEDES BENZ SUPERCHARGED	E55 AMG	W211	8 CYL	5.4	M113.990	10/2002 - 3/2006	AM7810	AM7810N	AM75BOSN
MERCEDES BENZ	MB 100		4 CYL	2.3	M161.971	1996 - 2004	AM7100	AM7100N	AM71BOSN
MERCEDES BENZ	ML320	W163	6 CYL	3.2	M112.942	1998 - 2003	AM7515	AM7515N	AM75BOSN
MERCEDES BENZ DIESEL	ML320	W164	4 CYL	3.2	M642.940	2005 - 2009			AM0048N
MERCEDES BENZ	ML430	W163	8 CYL	4.3	M113.942	6/1998 - 7/2002	AM7810	AM7810N	AM75BOSN
MERCEDES BENZ	ML500	W164	8 CYL	5.0	M113.964	2005 - 2007	AM7810	AM7810N	AM75BOSN
MERCEDES BENZ	ML55 AMG	W163	8 CYL	5.4	M113.981	3/2000 - 6/2004	AM7810	AM7810N	AM75BOSN
MERCEDES BENZ	S280	W140	6 CYL	2.8	M104.944	6/1993 - 9/1998	AM7500	AM7500N	AM75BOSN
MERCEDES BENZ	S320	W140	6 CYL	3.2	M104.994	6/1993 - 9/1999	AM7500	AM7500N	
MERCEDES BENZ	S320	W220	6 CYL	3.2	M112.944	10/1998 - 8/2002	AM7515	AM7515N	AM75BOSN
MERCEDES BENZ	S320		6 CYL	3.2	M104.990	1993 - 1999	AM3019		



AM7100



AM7114



AM7114



AM7515



AM7500



AM7810

Cant Find the Air Mass Meter your looking for?  
 Please contact Injectronics on 03 8792 6999 or NZ 0800 536 547  
 or search online @ [www.injectronics.com.au](http://www.injectronics.com.au)

Make	Model	Series	Cyl	Engine SIZE	Engine type	Year	Remanufactured Change over	NEW OEM Complete Assy	NEW OEM Insert only
<b>MERCEDES continued</b>									
MERCEDES BENZ	S350	W220	6 CYL	3.7	M112.972	2002 - 2005	AM7515	AM7515N	AM75BOSN
MERCEDES BENZ	S400	W140	8 CYL	4.2	M119.971	2/1991 - 9/1995	AM4004	AM4004N	
MERCEDES BENZ	S420	W140	8 CYL	4.2	M119.971	6/1993 - 9/1995	AM4004	AM4004N	
MERCEDES BENZ	S430	W220	8 CYL	4.3	M113.941	1998 - 2003	AM7810	AM7810N	AM75BOSN
MERCEDES BENZ	S500	W220	8 CYL	5.0	M113.960	6/2000 - 8/2005	AM7810	AM7810N	AM75BOSN
MERCEDES BENZ	SL280	W129	6 CYL	2.8	M104.943	7/1993 - 5/1998	AM7500	AM7500N	
MERCEDES BENZ	SL280	W220	6 CYL	2.8	M112.923	6/1998 - 8/2001	AM7515	AM7515N	AM75BOSN
MERCEDES BENZ	SL320	W129	6 CYL	3.2	M112.943	6/1998 - 8/2001	AM7515	AM7515N	AM75BOSN
MERCEDES BENZ	SL500	W230	8 CYL	5.0	M113.963	2001 - 2005	AM7810	AM7810N	AM75BOSN
MERCEDES BENZ	SLK200	W170	4 CYL	2.0	M111.958	2/2000 - 3/2004	AM4004	AM4004N	
MERCEDES BENZ	SLK200	W170	4 CYL	2.0	M111.958	2/2000 - 4/2004		AM9613N	
MERCEDES BENZ <i>S/CHARGED</i>	SLK200	W171	4 CYL	1.8	M271.944	2004 - 2008		AM9638N	
MERCEDES BENZ	SLK230	W170	4 CYL	2.3	M111.973	9/1996 - 1/1999	AM4004	AM4004N	
MERCEDES BENZ	SLK230 KOMP	W170	4 CYL	2.0	M111.983	2/2000 - 4/2004		AM9613N	
MERCEDES BENZ	SLK320	W170	6 CYL	3.2	M112.947	6/1999 - 3/2004	AM7515	AM7515N	AM75BOSN
MERCEDES BENZ	SLK55	W171	8 CYL	5.4	M113.989	2005 - 2011	AM7810	AM7810N	AM75BOSN
MERCEDES BENZ <i>DIESEL</i>	SPRINTER	311	4 CYL	2.1	M611.981	8/2002 - 5/2006	AM7517	AM7517N	AM75BOSN
MERCEDES BENZ <i>DIESEL</i>	SPRINTER	311	4 CYL	2.2	M611.981/7	4/2000 - 5/2006	AM7517	AM7517N	AM75BOSN
MERCEDES BENZ <i>DIESEL</i>	SPRINTER	903	5 CYL	2.7	M612.981	4/2000 - 5/2006	AM7517	AM7517N	AM75BOSN
MERCEDES BENZ <i>DIESEL</i>	SPRINTER	904	5 CYL	2.7	M612.981	4/2000 - 5/2006	AM7517	AM7517N	AM75BOSN
MERCEDES BENZ <i>DIESEL</i>	SPRINTER	905	5 CYL	2.7	M612.981	4/2000 - 5/2006	AM7517	AM7517N	AM75BOSN
MERCEDES BENZ	SPRINTER	208 CDI	4 CYL	2.2	M611.987	4/2000 - 5/2006			AM75BOSN
MERCEDES BENZ	SPRINTER	308 CDI	4 CYL	2.2	M611.987	4/2000 - 5/2006			AM75BOSN
MERCEDES BENZ	SPRINTER	313 CDI	4 CYL	2.2	M611.981	4/2000 - 5/2006			AM75BOSN
MERCEDES BENZ	SPRINTER	313 CDI	4 CYL	2.2	M611.987	8/2002 - 5/2006			AM75BOSN
MERCEDES BENZ	SPRINTER	316 CDI	5 CYL	2.7	M612.981	4/2000 - 5/2006			AM75BOSN
MERCEDES BENZ	SPRINTER	413 CDI	4 CYL	2.2	M611.981	4/2000 - 5/2006			AM75BOSN
MERCEDES BENZ	SPRINTER	416 CDI	5 CYL	2.7	M612.981	4/2000 - 5/2006			AM75BOSN
MERCEDES BENZ	SPRINTER	616 CDI	5 CYL	2.7	M612.981	2002 - 2006			AM75BOSN
MERCEDES BENZ	VIANO	639	6 CYL	3.7	M112.976	2004 - 2010	AM7515	AM7515N	AM75BOSN
MERCEDES BENZ	VIANO	639	6 CYL	3.7	M112.976	2004 - 2010			AM0048N
MERCEDES BENZ	VITO	638	4 CYL	2.0	M111.950	11/1995 - 9/2003	AM7114	AM7114N	AM75BOSN
MERCEDES BENZ	VITO	639	6 CYL	3.2	M112.951	2003 - 2006	AM7515	AM7515N	AM75BOSN



AM7114



AM9638



AM7515



AM7500



AM7810



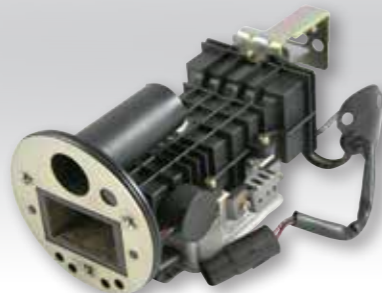
AM7114

**Cant Find the Air Mass Meter your looking for?**  
 Please contact Injectronics on 03 8792 6999 or NZ 0800 536 547  
 or search online @ [www.injectronics.com.au](http://www.injectronics.com.au)

Make	Model	Series	Cyl	Engine SIZE	Engine type	Year	Remanufactured Change over	NEW OEM Complete Assy	NEW OEM Insert only
<b>mitsubishi</b>									
MITSUBISHI	CHALLENGER	PA	6 CYL	3.0	6G72	12/1997 - 5/2001	<b>AM08171</b>		
MITSUBISHI	COLT	RG	4 CYL	1.5	4G15T	2006 - 2010			<b>AM60171N</b>
MITSUBISHI	COLT	RZ CABRIO	4 CYL	1.5	4G15T	2006 - 2010			<b>AM60171N</b>
MITSUBISHI	CORDIA	AA-AC	4 CYL	1.8	4G37	1983 - 1989	<b>AM00174</b>		
MITSUBISHI	CORDIA	AA-AC	4 CYL	1.8	4G37	1983 - 1989	<b>AM00274</b>		
MITSUBISHI	EXPRESS	SF/SG /SH	4 CYL	2.4	4G64	1994 - 2003	<b>AMKV02</b>		
MITSUBISHI	EXPRESS	SJ	4 CYL	2.0	4G63	10/2003 - 1/2006	<b>AMKV02</b>		
MITSUBISHI	EXPRESS	SJ	4 CYL	2.4	4G64	6/1994 - 10/2003	<b>AMKV01</b>		
MITSUBISHI	GALANT	GSR	4 CYL	2.0	4G63	11/1988 - 11/1992	<b>AMKV04</b>	<b>AMKV04N</b>	
MITSUBISHI	GALANT	HG	4 CYL	2.0	4G63	11/1988 - 6/1990	<b>AMKV02</b>		
MITSUBISHI	GALANT	HH	4 CYL	2.0	4G63	6/1990 - 11/1992	<b>AMKV02</b>		
MITSUBISHI	GALANT	HJ	4 CYL	2.0	4G63	1993 - 1994	<b>AM05471</b>		
MITSUBISHI	GRANDIS	BA	4 CYL	2.4	4G69	2004 - 2010			<b>AM60171N</b>
MITSUBISHI	LANCER	CA	4 CYL	1.5	4G15	1988 - 1990	<b>AMKV03</b>	<b>AMKV03N</b>	
MITSUBISHI	LANCER	CB	4 CYL	1.5	4G15	6/1990 - 5/1992	<b>AMKV03</b>	<b>AMKV03N</b>	
MITSUBISHI	LANCER	CC	4 CYL	1.6	4G92	6/1992 - 4/1996	<b>AM05371</b>	<b>AM05371N</b>	
MITSUBISHI	LANCER	CC	4 CYL	1.8	4G93	6/1992 - 4/1996	<b>AM05371</b>	<b>AM05371N</b>	
MITSUBISHI	LANCER	CE	4 CYL	1.8	4G93	10/1995 - 9/2003	<b>AM08471</b>		
MITSUBISHI	LANCER	CG	4 CYL	2.0	4G94	6/2002 - 7/2003	<b>AM08471</b>		
MITSUBISHI	LANCER	CH	4 CYL	2.0	4G94	8/2003 - 11/2005	<b>AM08471</b>		
MITSUBISHI	LANCER	CH	4 CYL	2.4	4G69	2005 - 2007			<b>AM60171N</b>
MITSUBISHI	LANCER	CJ	4 CYL	2.0	4B11	2007 - 2010			<b>AM60171N</b>
MITSUBISHI	LANCER	GSR	4 CYL	1.8	4G93	6/1992 - 4/1996	<b>AM05371</b>	<b>AM05371N</b>	
MITSUBISHI	MAGNA	TN-TP	4 CYL	2.6	4G54	7/1987 - 6/1992	<b>AMKV01</b>		
MITSUBISHI	MAGNA	TR-TS	6 CYL	2.6	4G54	4/1991 - 12/1996	<b>AM06071</b>		
MITSUBISHI	MAGNA	TR- TS	6 CYL	3.0	6G72	4/1991 - 12/1996	<b>AM06071</b>		
MITSUBISHI	MAGNA	TE	6 CYL	3.0	6G72	2/1996 - 5/1997	<b>AM06075</b>		
MITSUBISHI	MAGNA	TE	6 CYL	3.5	6G74	2/1996 - 5/1997	<b>AM06075</b>		
MITSUBISHI	MAGNA	TE/TF	4 CYL	2.4	4G64	6/1997 - 1/1999	<b>AM06071</b>		
MITSUBISHI	MAGNA	TF	6 CYL	3.0	6G72	6/1997 - 1/1999	<b>AM06075</b>		
MITSUBISHI	MAGNA	TF	6 CYL	3.5	6G74	6/1997 - 1/1999	<b>AM06075</b>		
MITSUBISHI	MAGNA	TH / TJ	6 CYL	3.0	6G72	2/1999 - 5/2003	<b>AM06071</b>		



**AM08171**



**AM00174**



**AM05371**



**AMKV02**



**AMKV03**



**AM08471**

Cant Find the Air Mass Meter your looking for?  
 Please contact Injectronics on 03 8792 6999 or NZ 0800 536 547  
 or search online @ www.injectronics.com.au

Make	Model	Series	Cyl	Engine SIZE	Engine type	Year	Remanufactured Change over	NEW OEM Complete Assy	NEW OEM Insert only
<b>MITSUBISHI continued</b>									
MITSUBISHI	MAGNA	TH / TJ / TL / TW	6 CYL	3.5	6G74	2/1999 - 7/2005	AM06071		
MITSUBISHI	NIMBUS	UA-UC	4 CYL	1.8	4G37	1987 - 1991	AMKV02		
MITSUBISHI	NIMBUS	UF	4 CYL	2.4	4G64	6/1992 - 7/1998	AM06071		
MITSUBISHI	NIMBUS	UG	4 CYL	2.4	4G64	7/1998 - 10/2003	AM08171		
MITSUBISHI	OUTLANDER	ZE	4 CYL	2.4	4G64	12/2002 - 5/2004	AM08171		
MITSUBISHI	OUTLANDER	ZF	4 CYL	2.4	4G69	6/2004 - 9/2006			AM60171N
MITSUBISHI	OUTLANDER	ZG	4 CYL	2.4	4G69	2006 - 2010			AM60171N
MITSUBISHI	OUTLANDER	ZG	6 CYL	3.0	6B31	2006 - 2010			AM60171N
MITSUBISHI	PAJERO	NF / NG	6 CYL	3.0	6G72	7/1988 - 12/1990	AMKV01		
MITSUBISHI	PAJERO	NH / NJ / NK	6 CYL	3.0	6G72	1/1991 - 5/1997	AM06071		
MITSUBISHI	PAJERO	NJ / NK / NL	6 CYL	3.5	6G74	7/1993 - 6/2000	AM06071		
MITSUBISHI	PAJERO	NM / NP	6 CYL	3.5	6G74	2/2000 - 9/2006	AM08071	AM08071N	
MITSUBISHI	PAJERO	NS	6 CYL	3.8	6G75	2006 - 2008			AM60171N
MITSUBISHI	STARWAGON	SF / SG / SH	4 CYL	2.4	4G64	8/1986 - 5/1994	AMKV02		
MITSUBISHI	STARWAGON	WA	4 CYL	2.4	4G64	6/1994 - 11/2005	AM06071		
MITSUBISHI	STARWAGON	WA	6 CYL	3.0	6G72	6/1994 - 7/1996	AM06071		
MITSUBISHI	TRITON	MH	6 CYL	3.0	6G72	6/1990 - 5/1992	AM06071		
MITSUBISHI	TRITON	MJ	6 CYL	3.0	6G72	6/1992 - 5/1995	AM06071		
MITSUBISHI	TRITON	MK	4 CYL	2.4	4G64	6/1996 - 8/2006	AM06071		
MITSUBISHI	TRITON	MK	6 CYL	3.0	6G72	6/1996 - 8/2003	AM06071		
MITSUBISHI	TRITON	MK	6 CYL	3.0	6G72	9/2003 - 8/2006	AM08071	AM08071N	
MITSUBISHI	TRITON	ML	4 CYL	2.4	4G64	1/2007 -			AM60171N
MITSUBISHI	TRITON	ML	6 CYL	3.5	6G74	9/2006 -			AM60171N
MITSUBISHI	VERADA	KE	6 CYL	3.5	6G74	2/1996 - 5/1997	AM06071		
MITSUBISHI	VERADA	KF	6 CYL	3.0	6G72	6/1997 - 1/1999	AM06075		
MITSUBISHI	VERADA	KF	6 CYL	3.5	6G74	6/1997 - 1/1999	AM06075		
MITSUBISHI	VERADA	KH / KJ / KL / KW	6 CYL	3.5	6G74	2/1999 - 7/2005	AM06071		
MITSUBISHI	VERADA	KR / KS / KE	6 CYL	3.0	6G72	7/1991 - 5/1997	AM06071		



AM06071



AMKV02



AM08171



AM06075

**Cant Find the Air Mass Meter your looking for?**  
**Please contact Injectronics on 03 8792 6999 or NZ 0800 536 547**  
**or search online @ [www.injectronics.com.au](http://www.injectronics.com.au)**

Make	Model	Series	Cyl	Engine SIZE	Engine type	Year	Remanufactured Change over	NEW OEM Complete Assy	NEW OEM Insert only
<b>NISSAN</b>									
NISSAN	200SX	S13	4 CYL	2.0	SR20DET	1991 - 1995	AM69F00		
NISSAN	200SX	S14	4 CYL	2.0	SR20DET	1994 - 2000	AM52F01		
NISSAN	200SX	S15	4 CYL	2.0	SR20DET	1999 - 2002	AM52F01		
NISSAN	280ZX	S130	6 CYL	2.8	L28	1979 - 1984	AM2001		
NISSAN	280ZX	S130	6 CYL	2.8	L28	1979 - 1984	AMP6800		
NISSAN	280ZX	S130	6 CYL	2.8	L28	1979 - 1984	AMV0800		
NISSAN	280ZX	S130	6 CYL	2.8	L28	1979 - 1984	AMV3000		
NISSAN	300C	Y30	6 CYL	3.0	VG30E	1984 - 1989	AM0300		
NISSAN	300ZX	Z31	6 CYL	3.0	VG30E/ET	1984 - 1989	AM0031		
NISSAN	300ZX	Z32	6 CYL	3.0	VG30DE/DETT	1989 - 1996	AM30P00		
NISSAN	350Z	Z33	6 CYL	3.5	VQ35DE	2002 - 2009			AM7S000N
NISSAN	BLUEBIRD	U12	4 CYL	2.0	C20E	1989 - 1993	AM2008		
NISSAN	BLUEBIRD	U13	4 CYL	2.4	KA24	1993 - 1996	AM53F00		
NISSAN	GAZELLE	S12	4 CYL	2.0	CA20	1986 - 1988	AM11F10		
NISSAN	MAXIMA	A32	6 CYL	3.0	VQ30DE	11/1994 - 8/1999	AM31U00		
NISSAN	MAXIMA	A33	6 CYL	3.0	VQ30DE	1999 - 2003	AMAD210		AMAD210N
NISSAN	MAXIMA	J30	6 CYL	3.0	VG30	1990 - 1994	AM16V00		
NISSAN	MAXIMA	J31	6 CYL	3.5	VQ35DE	2003 - 2009			AM7S000N
NISSAN	<i>Throttle Body &amp; Air Mass Complete</i>	MICRA	K11E	4 CYL	1.3	CG13DE	12/1995 - 2/1998	AM0U000	AM0U000N
NISSAN	MURANO	Z50	6 CYL	3.5	VQ35DE	2005 - 2011			AM7S000N
NISSAN	NAVARA	D21	6 CYL	3.0	VG30	3/1992 - 1/1997	AM88G00		
NISSAN	NAVARA	D22	6 CYL	3.3	VG33E	2002 - 2006	AM2J200	AM2J200N	
NISSAN	NAVARA	D40	6 CYL	4.0	VQ40DE	2005 - 2010			AM7S000N
NISSAN	NX	B13	4 CYL	2.0	SR20DE	8/1991 - 10/1993	AM53J01		
NISSAN	PATHFINDER	R50	6 CYL	3.3	VG33E	9/1995 - 3/2005	AM2J200	AM2J200N	
NISSAN	<i>TURBO DIESEL</i>	PATHFINDER	R51	4 CYL	2.5	YD25DDTI	2005 - 2010		AM7S000N
NISSAN	PATHFINDER	R51	6 CYL	4.0	VQ40DE	2005 - 2010			AM7S000N
NISSAN	PATHFINDER	WD21	6 CYL	3.0	VG30	7/1992 - 9/1995	AM88G00		
NISSAN	PATROL	GQ	4 CYL	4.2	TB42	10/1991 - 2/1999	AM0033	AM0033N	
NISSAN	PATROL	GU	6 CYL	2.8	RD28T	10/1997 - 2/2000	AM31U00	AM31U00N	



AM69F00



AM0033



AM53F00



AM0031



AM2J200



AM16V00

**Cant Find the Air Mass Meter your looking for?**  
**Please contact Injectronics on 03 8792 6999 or NZ 0800 536 547**  
**or search online @ [www.injectronics.com.au](http://www.injectronics.com.au)**

Make	Model	Series	Cyl	Engine SIZE	Engine type	Year	Remanufactured Change over	NEW OEM Complete Assy	NEW OEM Insert only
<b>NISSAN continued</b>									
NISSAN	PATROL	GU	6 CYL	3.0	ZD30DDTI	2/2000 - 8/2004	AMAD210		AMAD210N
NISSAN	PATROL	GU	6 CYL	3.0	ZD30DDTI	9/2004 - 2010			AM7S000N
NISSAN	PATROL	GU	6 CYL	4.8	TB48DE	2001 - 2010	AMVC201	AMVC201N	
NISSAN	PATROL	Y61	6 CYL	4.5	TB45E	10/1997 - 9/2001	AM0033	AM0033N	
NISSAN	PINTARA	R31	4 CYL	2.0	CA20	1986 - 1989	AM07F01		
NISSAN	PINTARA	R31	4 CYL	2.0	CA20	1986 - 1989	AM2111		
NISSAN	PINTARA	U12	4 CYL	2.0	CA20	11/1989 - 10/1992	AM2008		
NISSAN	PINTARA	U12	4 CYL	2.4	KA24	1989 - 1992	AM0034		
NISSAN	PRIMERA	P11	4 CYL	2.0	SR20DE	1995 - 2002	AM2J200	AM2J200N	
NISSAN	PULSAR	N12	4 CYL	1.5	E15T	1983 - 1986	AM29M00		
NISSAN	PULSAR	N13	4 CYL	1.8	CA18	1988 - 1991	AM61A00		
NISSAN	PULSAR	N14	4 CYL	1.6	GA16	12/1992 - 8/1995	AM0014		
NISSAN	PULSAR	N14	4 CYL	2.0	SR20	1991 - 1995	AM0015		
NISSAN	PULSAR	N15	4 CYL	1.6	GA16	1995 - 2003	AM0M605		
NISSAN 4 PIN PLUG	PULSAR	N16	4 CYL	1.6	QGD16DE	5/2000 - 8/2005	AMAD210		AMAD210N
NISSAN 5 PIN PLUG	PULSAR	N16	4 CYL	1.6	QGD16DE	5/2000 - 8/2005			AM6N211N
NISSAN	SERENA	C23	4 CYL	2.0	SR20DE	5/1992 - 6/1999	AM53J01		
NISSAN	SKYLINE	R30	6 CYL	2.4	L24E	1981 - 1986	AMS2800		
NISSAN	SKYLINE	R31	6 CYL	3.0	RB30	1986 - 1990	AM2008		
NISSAN	SKYLINE	R32	6 CYL	2.0	RB20DET	5/1989 - 7/1993	AM02U00		
NISSAN	SKYLINE	R32	6 CYL	2.6	RB26DET	5/1989 - 7/1993	AM05U00		
NISSAN	SKYLINE	R33	6 CYL	2.5	RB25DET	8/1993 - 5/1998	AM02U00		
NISSAN	SKYLINE	R34	6 CYL	2.5	RB25DET	6/1998 - 6/2001	AM31U00	AM31U00N	
NISSAN 5 PIN BOSCH UNIT	TERRANO	R20	4 CYL	2.7	TD27TI	7/1998 - 10/1999		AM2207N	AM22BOSN
NISSAN 4 PIN HITACHI UNIT	TERRANO	R20	4 CYL	2.7	TD27TI	1997 - 2000	AM2J200	AM2J200N	
NISSAN	TIDA	C11	4 CYL	1.8	MR18DE	2005 - 2007			AM7S000N
NISSAN	UTE	XFN	4 CYL	4.1		1988 - 1991	AM2077		
NISSAN	X TRAIL	T30	4 CYL	2.5	QR25DE	9/2001 - 11/2003			AM6N211N
NISSAN	X TRAIL	T30	4 CYL	2.5	QR25DE	12/2003 - 2007			AM7S000N



AM2J200



AM0033



AM31U00



AM0031



AM2008



AM0014

Cant Find the Air Mass Meter your looking for?  
 Please contact Injectronics on 03 8792 6999 or NZ 0800 536 547  
 or search online @ [www.injectronics.com.au](http://www.injectronics.com.au)

Make	Model	Series	Cyl	Engine SIZE	Engine type	Year	Remanufactured Change over	NEW OEM Complete Assy	NEW OEM Insert only
<b>PEUGEOT</b>									
PEUGEOT	205	D6	4 CYL	1.9		10/1987 - 9/1990	AM2109		
PEUGEOT	205		4 CYL	1.6	B6A/B/D/E	1983 - 1995	AM2056		
PEUGEOT	205		4 CYL	1.9	DFY/DKZ	10/1987 - 10/1994	AM2202	AM2202N	
PEUGEOT	205		4 CYL	1.9	DFZ	1986 - 1987	AM2097		
PEUGEOT	205		4 CYL	1.9	XU9J	1990 - 1994	AM2202	AM2202N	
PEUGEOT	305		4 CYL	1.9	DFZ	1982 - 1990	AM2097		
PEUGEOT	306		4 CYL	2.0	RHY	6/1999 - 10/2003		AM9621N	
PEUGEOT	307		4 CYL	2.0	RHY	8/2000 - 5/2005		AM9621N	
PEUGEOT	307		4 CYL	2.0	RHY	8/2000 - 5/2005		AM9623N	
PEUGEOT	309		4 CYL	1.9	DFZ	1986 - 1993	AM2097		
PEUGEOT	405		4 CYL	1.9	D6C	7/1987 - 12/1992	AM2202	AM2202N	
PEUGEOT	405		4 CYL	1.9	DFW	4/1988 - 11/1992	AM2202	AM2202N	
PEUGEOT	405		4 CYL	1.9	DFY/DKZ	7/1988 - 12/1992	AM2202	AM2202N	
PEUGEOT	405		4 CYL	1.9	DFZ	1987 - 1992	AM2097		
PEUGEOT	406		4 CYL	2.0	RHS	1/2001 - 6/2004		AM9621N	
PEUGEOT	505	154X	6 CYL	2.8	ZN3J	1987 - 1989	AM3006	AM3006N	
PEUGEOT	505	SERIES 1/2	4 CYL	2.2		1986 - 1990	AM2098		
PEUGEOT	505 STI	851	4 CYL	2.2		1983 - 1986	AM2051		
PEUGEOT	GTi		4 CYL	1.9	DFZ	1987 - 1991	AM2097		
<b>PORSCHE</b>									
PORSCHE	911		6 CYL	3.2		1983 - 1988	AM3023		
PORSCHE	911	GT2/3	6 CYL	3.6		3/1999 - 8/2001	AM7007	AM7007N	
PORSCHE	911		6 CYL	3.4		1997 - 2001	AM7007	AM7007N	
PORSCHE	928		8 CYL	4.7		1983 - 1985	AM4001		
PORSCHE	928		8 CYL	5.0		1986 - 1992	AM4001		
PORSCHE	944		4 CYL	2.5	M44	1985 - 1991	AM3026		
PORSCHE	944		4 CYL	2.5		7/1981 - 12/1984	AM2028		
PORSCHE	944		4 CYL	2.5		1984 - 1986	AM2064		
PORSCHE	944		4 CYL	2.5		1984 - 1987	AM3028		
PORSCHE	944		4 CYL	2.5		1986 - 1989	AM3026		
PORSCHE	944		4 CYL	3.0		1989 - 1991	AM3029		
PORSCHE	BOXSTER		6 CYL	2.5	M96.20	10/1996 - 8/1999	AM7007	AM7007N	
PORSCHE	BOXSTER		6 CYL	2.7	M96.22/23	9/1999 - 8/2004	AM7007	AM7007N	
PORSCHE	BOXSTER		6 CYL	3.2	M96.21/24	9/1999 - 8/2004	AM7007	AM7007N	



AM2056



AM2097



AM3006



AM9621



AM9623



AM2202



**Cant Find the Air Mass Meter your looking for?**  
 Please contact Injectronics on 03 8792 6999 or NZ 0800 536 547  
 or search online @ [www.injectronics.com.au](http://www.injectronics.com.au)

Make	Model	Series	Cyl	Engine SIZE	Engine type	Year	Remanufactured Change over	NEW OEM Complete Assy	NEW OEM Insert Only
<b>PROTON</b>									
PROTON	SATRIA		4 CYL	1.8	4G93	1/1998 - 6/2005	AM05371	AM05371N	
PROTON	WIRA		4 CYL	1.6	4G92	1993 - 1996	AM05371	AM05371N	
<b>RANGE ROVER</b>									
RANGE ROVER	RANGE ROVER		6 CYL	3.0	M57 D30	2009 - 2010			AM75BOSN
RANGE ROVER	RANGE ROVER		8 CYL	3.5		1985 - 1990	AM2046		
RANGE ROVER	RANGE ROVER		8 CYL	3.9		1989 - 1999	AM0022	AM0022N	
RANGE ROVER FROM VIN# WA410481	RANGE ROVER		8 CYL	4.0		1999 - 2003	AM8010	AM8010N	AM75BOSN
RANGE ROVER UP TO XA# 410482	RANGE ROVER		8 CYL	4.0		1999 - 2003	AM20AM	AM20AMN	
RANGE ROVER	RANGE ROVER		8 CYL	4.2		2005 - 2009		AM3021N	
RANGE ROVER	RANGE ROVER		8 CYL	4.4	M62 B44	2002 - 2005			AM75BOSN
RANGE ROVER	RANGE ROVER		8 CYL	4.4	448PN	4/2005 - 8/2009			AM3021N
RANGE ROVER	RANGE ROVER		8 CYL	4.6		1999 - 2002	AM8010	AM8010N	AM75BOSN
<b>RENAULT</b>									
RENAULT	MEGANE		4 CYL	1.9	F9Q / TURBO	2007 - 2010		AM9620N	
RENAULT	TRAFIC		4 CYL	1.9	F9Q / TURBO	2004 - 2007		AM9620N	
<b>SAAB</b>									
SAAB	900		4 CYL	2.0	B202L	9/1988 - 8/1993	AM2013		
SAAB	900		4 CYL	2.0	B204i / B206i	3/1994- 8/1998			
<i>CONFIRM WITH OE NUMBER = 0280217105</i>							AM7105	AM7105N	
<i>CONFIRM WITH OE NUMBER = 0280217119</i>							AM7119	AM7119N	AM79BOSN
<i>CONFIRM WITH OE NUMBER = 0280217120</i>							AM7120	AM7120N	AM72BOSN
SAAB	900		4 CYL	2.1	B212i	9/1990 - 8/1993	AM2019		
SAAB	900		6 CYL	2.5	B258i	1993 - 1998	AM7520	AM7520N	
SAAB	9000		4 CYL	2.0	B202	1986 - 1993			
<i>CONFIRM WITH OE NUMBER = 0280212009</i>							AM2009	AM2009N	
<i>CONFIRM WITH OE NUMBER = 0280212011</i>							AM2011	AM2011N	
<i>CONFIRM WITH OE NUMBER = 0280212005</i>							AM2005	AM2005N	
SAAB TURBO	9000		4 CYL	2.0	B202L	1/1990 - 8/1993	AM2013		
SAAB	9000		4 CYL	2.3	B234	1990 - 1998	AM2019		



AM2011



AM2013



AM2009



AM20AM



AM9620



AM7105



AM7120



AM7119

**Cant Find the Air Mass Meter your looking for?**  
 Please contact Injectronics on 03 8792 6999 or NZ 0800 536 547  
 or search online @ [www.injectronics.com.au](http://www.injectronics.com.au)

Make	Model	Series	Cyl	Engine SIZE	Engine type	Year	Remanufactured Change over	NEW OEM Complete Assy	NEW OEM Insert Only
<b>SAAB continued</b>									
SAAB <i>TURBO</i>	9-3		4 CYL	2.0	B204E	3/1998 - 8/2000	AM7120	AM7120N	AM72BOSN
SAAB	9-3		4 CYL	2.0	B204i	3/1998 - 9/2000	AM7120	AM7120N	AM72BOSN
SAAB <i>TURBO</i>	9-3		4 CYL	2.0	B204L	3/1998 - 8/2000	AM7120	AM7120N	
SAAB <i>TURBO</i>	9-3		4 CYL	2.0	B205E	9/1999 - 8/2002	AM7120	AM7120N	AM72BOSN
SAAB <i>TURBO</i>	9-3		4 CYL	2.0	B205L	9/1999 - 8/2002	AM7120	AM7120N	AM72BOSN
SAAB <i>TURBO</i>	9-3		4 CYL	2.0	B205R	9/1999 - 8/2002	AM7120	AM7120N	AM72BOSN
SAAB	9-3	11/12/2010	4 CYL	2.3	B234i	3/1998 - 8/2000	AM7120	AM7120N	AM72BOSN
SAAB	9-3		4 CYL	2.3	B235R	9/1999 - 8/2000	AM7120	AM7120N	AM72BOSN
SAAB	9-5		4 CYL	2.0	B205E	1998 - 2004	AM3386	AM3386N	
SAAB	9-5		4 CYL	2.3	B235E	1997 - 2008	AM3386	AM3386N	
SAAB	9-5		4 CYL	2.3	B235L	2003 - 2006	AM3386	AM3386N	
SAAB	9-5		4 CYL	2.3	B235R	1999 - 2006	AM3386	AM3386N	
<b>SEAT</b>									
SEAT	IBIZA		4 CYL	2.0	ABF	1994 - 1997	AM2142		
SEAT	TOLEDO		4 CYL	2.0	2E	5/1991 - 6/1996	AM2130		
<b>SKODA</b>									
SKODA	ROOMSTER		4 CYL	1.9	BSW/BLS	5/2006 - 2009		AM2531N	
<b>SSANGYONG</b>									
SSANGYONG	CHAIRMAN		4 CYL	2.3	M111	10/1998 - 3/2001			AM75BOSN
SSANGYONG	CHAIRMAN		6 CYL	2.8	M104	7/1997 - 9/2000			AM75BOSN
SSANGYONG	CHAIRMAN		6 CYL	3.2	M162.994	7/1997 - 9/2000			AM75BOSN
SSANGYONG	KORANDA		6 CYL	3.2	M162 E32	5/1997 - 6/1998	AM7500	AM7500N	
SSANGYONG	KORANDO	KJ	4 CYL	2.3	M161 E23	5/1997 - 6/1998	AM7100	AM7100N	AM71BOSN
SSANGYONG	KORANDO	KJ	6 CYL	3.2	M161 E23	7/1998 - 9/2005	AM7515	AM7515N	AM75BOSN
SSANGYONG	MUSSO		4 CYL	2.3	M161 E23	3/1996 - 6/1998	AM7100	AM7100N	AM71BOSN
SSANGYONG	MUSSO		4 CYL	2.3	M161 E23	7/1998 - 4/2005	AM7515	AM7515N	AM75BOSN
SSANGYONG	MUSSO		6 CYL	3.2	M162 E32	9/1995 - 6/1998	AM7500	AM7500N	
SSANGYONG	MUSSO		6 CYL	3.2	M161 E32	7/1998 - 4/2005	AM7515	AM7515N	AM75BOSN
SSANGYONG	REXTON		6 CYL	3.2	M161 E32	2/2002 - 4/2004			AM75BOSN



AM7120



AM3386



AM7500



AM2142



AM7500



AM7515

**Cant Find the Air Mass Meter your looking for?**  
**Please contact Injectronics on 03 8792 6999 or NZ 0800 536 547**  
**or search online @ [www.injectronics.com.au](http://www.injectronics.com.au)**

Make	Model	Series	Cyl	Engine SIZE	Engine type	Year	Remanufactured Change over	NEW OEM Complete Assy	NEW OEM Insert Only
<b>SUBARU</b>									
SUBARU	FORESTER	GT	4 CYL	2.0	EJ205	3/1998 - 8/2000			AMAA301N
SUBARU	FORESTER	GT	4 CYL	2.0	EJ205	5/2000 - 5/2002			AMAA310N
SUBARU	FORESTER	GT	4 CYL	2.5	EJ255	4/2003-0N			AMAA310N
SUBARU	FORESTER	GT	4 CYL	2.5	EJ204	2005 - 12/2007			AMAA380N
SUBARU	FORESTER	S11	4 CYL	2.0	EJ201	2/2002- 2/2005			AMAA310N
SUBARU	FORESTER	S11	4 CYL	2.5	EJ253	4/2006-0N			AMAA310N
SUBARU	FORESTER	S12	4 CYL	2.5	EJ255	6/2007 - 2010			AMAA380N
SUBARU	IMPREZA	GC-GF	4 CYL	2.0	EJ20E	3/1996 - 9/1998	AMAA160		
SUBARU	IMPREZA	GF	4 CYL	1.8	EJ18E	4/1993 - 11/1996	AMAA170		
SUBARU	IMPREZA	WRX	4 CYL	2.0	EJ20G	5/1993 - 5/1996	AMAA160		
SUBARU	IMPREZA	WRX	4 CYL	2.0	EJ20G	6/1996 - 7/1998	AMAA280		
SUBARU	IMPREZA	WRX	4 CYL	2.0	EJ205	3/1998 - 9/2000			AMAA301N
SUBARU	IMPREZA	WRX	4 CYL	2.0	EJ205	4/2000 - 7/2005			AMAA310N
SUBARU	IMPREZA	WRX	4 CYL	2.5	EJ255	6/2005 - 0N			AMAA310N
SUBARU	IMPREZA	WRX STi	4 CYL	2.0	EJ207	3/1998 - 9/2000			AMAA301N
SUBARU	IMPREZA	WRX STi	4 CYL	2.0	EJ207	4/2001 - 7/2005			AMAA310N
SUBARU	IMPREZA	WRX STi	4 CYL	2.5	EJ257	6/2005 - 0N			AMAA310N
SUBARU	IMPREZA	G12	4 CYL	2.5	EJ204	7/2007 - 0N			AMAA380N
SUBARU	LEONE	A	4 CYL	1.8	EA82	4/1985 - 9/1989	AM0301		
SUBARU	LEONE	RX TURBO	4 CYL	1.8		1985 - 1994	AMAA030		
SUBARU	LIBERTY	B10 / B11	4 CYL	2.0	EJ20	5/1989 - 5/1999	AMAA160		
SUBARU	LIBERTY	B10 / B11	4 CYL	2.2	EJ22	5/1989 - 11/1998	AMAA160		
SUBARU	LIBERTY	B10 / B11	4 CYL	2.5	EJ25	3/1996 - 11/1998	AMAA160		
SUBARU	LIBERTY	B12	4 CYL	2.0	EJ206	2/2002 - 6/2003			AMAA310N
SUBARU	LIBERTY	B12	4 CYL	2.0	EJ208	1/2001 - 6/2003			AMAA310N
SUBARU	LIBERTY	B13	4 CYL	2.0	EJ20X	5/2003 - 6/2006			AMAA310N
SUBARU	LIBERTY	B13	4 CYL	2.0	EJ20Y	3/2004 - 6/2006			AMAA310N
SUBARU	LIBERTY	B13	4 CYL	2.5	EJ252	5/2003 -			AMAA310N
SUBARU	LIBERTY	B13	4 CYL	2.5	EJ253	5/2003 -			AMAA310N
SUBARU	LIBERTY	B13	6 CYL	3.0	EZ30D	5/2003 -			AMAA310N
SUBARU	LIBERTY	B13	4 CYL	2.5	EJ255	4/2006 - 2009			AMAA310N
SUBARU	LIBERTY	B13	4 CYL	2.5	EJ204	3/2005 - 2007			AMAA380N



AM0301



AMAA160



AMAA041



AMAA200



AMAA310

Cant Find the Air Mass Meter your looking for?  
 Please contact Injectronics on 03 8792 6999 or NZ 0800 536 547  
 or search online @ www.injectronics.com.au

Make	Model	Series	Cyl	Engine SIZE	Engine type	Year	Remanufactured Change over	NEW OEM Complete Assy	NEW OEM Insert Only
<b>SUBARU continued</b>									
SUBARU	OUTBACK	BG	4 CYL	2.5	EJ25D	1996 - 1998	<b>AMAA160</b>		
SUBARU	OUTBACK	B12	4 CYL	2.0	EJ206	2/2002 - 6/2003			<b>AMAA310N</b>
SUBARU	OUTBACK	B12	4 CYL	2.0	EJ208	1/2001 - 6/2003			<b>AMAA310N</b>
SUBARU	OUTBACK	B13	4 CYL	2.0	EJ20Y	3/2004 - 6/2006			<b>AMAA310N</b>
SUBARU	OUTBACK	B13	4 CYL	2.5	EJ252	5/2003 -			<b>AMAA310N</b>
SUBARU	OUTBACK	B13	4 CYL	2.5	EJ253	5/2003 -			<b>AMAA310N</b>
SUBARU	OUTBACK	B13	6 CYL	3.0	EZ30D	5/2003 -			<b>AMAA310N</b>
SUBARU	OUTBACK	B13	4 CYL	2.5	EJ255	4/2006 - 2009			<b>AMAA310N</b>
SUBARU	OUTBACK	B13	4 CYL	2.5	EJ204	3/2005 - 2007			<b>AMAA380N</b>
SUBARU	SVX	CKW	6 CYL	3.3	EG33	1/1992 - 7/1996	<b>AMAA200</b>		
SUBARU	VORTEX		4 CYL	1.8		1985 - 1989	<b>AMAA041</b>		
<b>SUZUKI</b>									
SUZUKI	<i>COMPLETE THROTTLE BODY AND AIR MASS METER</i>	BALENO	4 CYL	1.8	J18A	1996 - 2001		<b>TB220N</b>	
SUZUKI		GRAND VITARA	4 CYL	1.6	M16A	2005 - 2008			<b>AM2230N</b>
SUZUKI		GRAND VITARA	4 CYL	2.0	J20A	2005 - 2008			<b>AM2230N</b>
SUZUKI		JIMNY	4 CYL	1.3	M13A	1998 - 2011			<b>AM2230N</b>
SUZUKI		LIANA	4 CYL	1.6	M16A	2001 - 2007			<b>AM2230N</b>
SUZUKI		SWIFT	4 CYL	1.3	G13/G13B	1986 - 1992	<b>AM4551</b>		
SUZUKI		SWIFT	4 CYL	1.3	G13B	1989 - 1999	<b>AMAFH38M02</b>		
SUZUKI		SWIFT	4 CYL	1.5	M15A	2004 - 2011			<b>AM2230N</b>
SUZUKI		SWIFT	4 CYL	1.6	M16A	2006 - 2011			<b>AM2230N</b>
SUZUKI		VITARA	4 CYL	1.6	G16B	1/1991 - 11/1995	<b>AM57B00</b>		
SUZUKI		VITARA	4 CYL	1.6	G16B	1/1996 - 4/1998	<b>AM58B00</b>	<b>AM58B00N</b>	
SUZUKI	<i>COMPLETE THROTTLE BODY AND AIR MASS METER</i>	VITARA	4 CYL	2.0	J20A	1996 - 1998		<b>TB220N</b>	
SUZUKI		VITARA	4 CYL	1.6	G16B	1994 - 1998	<b>AM58B00</b>	<b>AM58B00N</b>	
SUZUKI	<i>DIESEL TURBO</i>	VITARA	4 CYL	2.0	JSAF	1998 - 2002		<b>AM9621N</b>	
SUZUKI		X-90	4 CYL	1.6	G16B	1996 - 1998	<b>AM58B00</b>	<b>AM58B00N</b>	
SUZUKI		XL7	6 CYL	2.7	H27A	2001 - 2003		<b>AM3372N</b>	



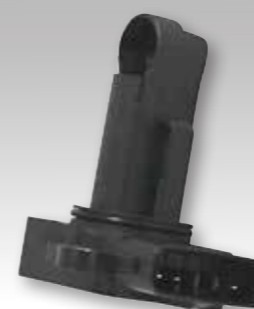
AM2230



AMAA041



AM2230



AMAA310N



AM57B00



AM58B00

**Cant Find the Air Mass Meter your looking for?**  
 Please contact Injectronics on 03 8792 6999 or NZ 0800 536 547  
 or search online @ [www.injectronics.com.au](http://www.injectronics.com.au)

Make	Model	Series	Cyl	Engine SIZE	Engine type	Year	Remanufactured Change over	NEW OEM Complete Assy	NEW OEM Insert Only
<b>TOYOTA</b>									
TOYOTA	4 RUNNER	YN130	4 CYL	2.2	4YE	1985 - 1990	AM73020		
TOYOTA	4 RUNNER	VZN130	6 CYL	3.0	3VZE	1990 - 1996	AM65010		
TOYOTA	4 RUNNER	VZN130	6 CYL	3.0	3VZ FE	1990 - 1996	AM65030		
TOYOTA	4 RUNNER	VZN	6 CYL	3.4	5VZFE	11/1995 - 7/1998	AM20020		
TOYOTA	4 RUNNER	VZN	6 CYL	3.4	5VZFE	7/1998 - 11/2002	AMZL01		AMZL01N
TOYOTA	4 RUNNER	GRN	6 CYL	4.0	1GRFE	11/2002 - 8/2004	AMZL01		AMZL01N
TOYOTA	AURION	GSV40	6 CYL	3.5	2GRFE	10/2005 - 2006	AMZL01		AMZL01N
TOYOTA	AURION	GSV40	6 CYL	3.5	2GRFE	10/2007 - 2011	AMTL01		AMTL01N
TOYOTA	AVALON	MCX10	6 CYL	3.0	1MZFE	9/1994 - 8/1996	AM20020		
TOYOTA	AVALON	MCX10	6 CYL	3.0	1MZFE	8/1996 - 9/2003	AM20010		AM20010N
TOYOTA	AVALON	MCX10	6 CYL	3.0	1MZFE	9/2003 - 6/2006	AMZL01		AMZL01N
TOYOTA	AVALON	MCX10	6 CYL	3.0	1MZFE	9/2007 - 6/2011	AMTL01		AMTL01N
TOYOTA	AVENSIS VERSO	ACM20	4 CYL	2.0	1AZFE	5/2001 - 10/2003	AMZL01		AMZL01N
TOYOTA	AVENSIS VERSO	ACM21	4 CYL	2.4	2AZFE	10/2003 - 2007	AMZL01		AMZL01N
TOYOTA	CAMRY	SV11	4 CYL	2.0	2SE	1983 - 1987	AM74030		
TOYOTA	CAMRY	SV21	4 CYL	2.0	3S-FE	1987 - 1989			
							AM74140		
							AM74240		
TOYOTA	CAMRY	SV21	6 CYL	2.5	2VZ-FE	1988 - 1993	AM62020		
TOYOTA	CAMRY	VDV10	6 CYL	3.0	3VZ-FE	1993 - 1995	AM62070		
TOYOTA	CAMRY	MCV20	6 CYL	3.0	1MZFE	8/1996 - 9/2001	AM20010	AM20010N	
TOYOTA	CAMRY	ACV36	4 CYL	2.4	2AZFE	8/2002 - 6/2006	AMZL01		AMZL01N
TOYOTA	CAMRY	ACV40	4 CYL	2.4	2AZFE	6/2005 - 2006	AMZL01		AMZL01N
TOYOTA	CAMRY	ACV40	4 CYL	2.4	2AZFE	6/2007 - 2011	AMTL01		AMTL01N
TOYOTA	CAMRY	HYBRID				6/2007 - 2011	AMTL01		AMTL01N
TOYOTA	CAMRY	GSV40	6 CYL	3.5	2GRFE	10/2006 - 12/2006	AMZL01		AMZL01N
TOYOTA	CAMRY	GSV40	6 CYL	3.5	2GRFE	1/2007 - 2011	AMTL01		AMTL01N
TOYOTA	CAMRY	MCV36	6 CYL	3.0	1MZFE	8/2004 - 6/2006	AMZL01		AMZL01N

HAS OE NUMBER =2225074140  
 HAS OE NUMBER =2225074240



AM74030



AM74140



AM74120



AM74240



AMTL01



AMZL01

**Cant Find the Air Mass Meter your looking for?**  
**Please contact Injectronics on 03 8792 6999 or NZ 0800 536 547**  
**or search online @ [www.injectronics.com.au](http://www.injectronics.com.au)**

Make	Model	Series	Cyl	Engine SIZE	Engine type	Year	Remanufactured Change over	NEW OEM Complete Assy	NEW OEM Insert Only
<b>TOYOTA continued</b>									
<b>TOYOTA</b>	CELICA	ST162	4 CYL	2.0	3S-FE	1986 - 1988			
							<b>AM74060</b>		
							<b>AM74120</b>		
<b>TOYOTA</b>	CELICA	ST185 GT4	4 CYL	2.0	3S-GTE	1989 - 1993			
							<b>AM74260</b>		
							<b>AM74180</b>		
							<b>AM74200</b>		
<b>TOYOTA</b>	CELICA	ZZT231	4 CYL	1.8	2ZZGE	8/1999 - 9/2005	<b>AMZL01</b>		<b>AMZL01N</b>
<b>TOYOTA</b>	COROLLA	ZZE123	4 CYL	1.8	2ZZGE	3/2003 - 10/2005	<b>AMZL01</b>		<b>AMZL01N</b>
<b>TOYOTA</b>	COROLLA	ZZE122	4 CYL	1.8	1ZZFE	2000 - 2006	<b>AMZL01</b>		<b>AMZL01N</b>
<b>TOYOTA</b>	COROLLA	ZRE152	4 CYL	1.8	2ZRFE	3/2005 - 2006	<b>AMZL01</b>		<b>AMZL01N</b>
<b>TOYOTA</b>	COROLLA	ZRE152	4 CYL	1.8	2ZRFE	3/2007 - 2011	<b>AMTL01</b>		<b>AMTL01N</b>
<b>TOYOTA</b>	CORONA	RT142	4 CYL	2.4	22R	1984 - 1985	<b>AM35010</b>		
<b>TOYOTA</b>	CORONA	RT142	4 CYL	2.4	22R	1984 - 1985	<b>AM35030</b>		
<b>TOYOTA</b>	GRESSIDA	MX62	6 CYL	2.8	5M	1981 - 1984	<b>AM43060</b>		
<b>TOYOTA</b>	GRESSIDA	MX73	6 CYL	2.8	5M	1985 - 1988	<b>AM43230</b>		
<b>TOYOTA</b>	GRESSIDA	MX73	6 CYL	2.8	5M	1984 - 1986	<b>AM43260</b>		
<b>TOYOTA</b>	GRESSIDA	MX83	6 CYL	3.0	7M-GE	1988 - 1993	<b>AM42080</b>		
<b>TOYOTA</b>	CROWN	MS112	6 CYL	2.8	5M	1982 - 1986	<b>AM43080</b>		
<b>TOYOTA</b>	CROWN	MS112	6 CYL	2.8	5M	1982 - 1986	<b>AM43180</b>		
<b>TOYOTA</b>	ECHO	NCP10	4 CYL	1.3	2NZFE	1999 - 2006	<b>AMZL01</b>		<b>AMZL01N</b>
<b>TOYOTA</b>	ECHO	NCP12	4 CYL	1.5	1NZFE	1999 - 2006	<b>AMZL01</b>		<b>AMZL01N</b>
<b>TOYOTA</b>	HIACE	RCH41/47	4 CYL	2.7	3RZ FE	1997 - 2000	<b>AM75010</b>		
<b>TOYOTA</b>	HILUX	GGN15/25R	6 CYL	4.0	1GRFE	2005 - 2010	<b>AMZL01</b>		<b>AMZL01N</b>
<b>TOYOTA</b>	HILUX	RZN	4 CYL	2.7	3RZFE	8/1997 - 11/2005	<b>AM75020</b>		<b>AM75020N</b>
<b>TOYOTA</b>	HILUX	TGN	4 CYL	2.0	1TRFE	2/2005 - 5/2006	<b>AMZL01</b>		<b>AMZL01N</b>
<b>TOYOTA</b>	HILUX	TGN	4 CYL	2.7	2TRFE	2/2005 - 2006	<b>AMZL01</b>		<b>AMZL01N</b>
<b>TOYOTA</b>	HILUX	VZN	6 CYL	3.4	5VZFE	8/2002 - 2/2005	<b>AMZL01</b>		<b>AMZL01N</b>
<b>TOYOTA</b>	KLUGER	GSU	6 CYL	3.5	2GRFE	2005 - 2006	<b>AMZL01</b>		<b>AMZL01N</b>
<b>TOYOTA</b>	KLUGER	MCU	6 CYL	3.3	3MZFE	2003 - 2006	<b>AMZL01</b>		<b>AMZL01N</b>
<b>TOYOTA</b>	KLUGER	MCU	6 CYL	3.3	3MZFE	2007 - 2011	<b>AMZL01</b>		<b>AMTL01N</b>



**AM35030**



**AM43080**



**AMTL01**



**AMZL01**



**AM43180**



**AMZL01**

**Cant Find the Air Mass Meter your looking for?**  
**Please contact Injectronics on 03 8792 6999 or NZ 0800 536 547**  
**or search online @ [www.injectronics.com.au](http://www.injectronics.com.au)**

Make	Model	Series	Cyl	Engine SIZE	Engine type	Year	Remanufactured Change over	NEW OEM Complete Assy	NEW OEM Insert Only
<b>TOYOTA continued</b>									
TOYOTA	LANDCRUISER	FJ80R	6 CYL	4.0	3FE	1990 - 1992	AM66030		
TOYOTA	LANDCRUISER	FZJ75	6 CYL	4.5	1FZ FE	8/1992 - 1/1999	AM66040		
TOYOTA	LANDCRUISER	FZJ80	6 CYL	4.5	1FZ FE	8/1992 - 1/1995	AM66030		
TOYOTA	LANDCRUISER	FZJ80	6 CYL	4.5	1FZ-FE	1/1995 - 3/1998	AM66050	AM66050N	
TOYOTA	LANDCRUISER	UZJ100	8 CYL	4.7	2UZFE	1998 - 2007	AM75020		AM75020N
TOYOTA	LAND/PRADO	GRJ	6 CYL	3.4	1GRFE	2000 - 2006	AMZL01		AMZL01N
TOYOTA	LAND/PRADO	GRJ	6 CYL	4.0	1GRFE	2007 - 2011	AMTL01		AMTL01N
TOYOTA	LAND/PRADO	RZJ95R	4 CYL	2.7	3RZ FE	1996 - 2002	AM75010		
TOYOTA	LAND/PRADO	VZJ	6 CYL	3.4	5VZFE	6/1999 - 2006	AMZL01		AMZL01N
TOYOTA	LAND/PRADO	VZJ	6 CYL	3.4	5VZFE	4/1996 - 6/1999	AM20020		
TOYOTA	LEXCEN	VS	6 CYL	3.8	VH	5/1995 - 8/1997	AM9556	AM9556N	
TOYOTA	MR2	AW11	4 CYL	1.6	4A-GE	1984 - 1989	AM16020		
TOYOTA	MR2	AW11	4 CYL	1.6	4A-GE	1984 - 1989	AM16040		
TOYOTA	MR2	ZZW30	4 CYL	1.8	1ZZFE	12/1999 - 9/2005	AMZL01		AMZL01N
TOYOTA	MR2		4 CYL				AM74210		
TOYOTA	PREVIA		4 CYL	2.4	2TTZFE	1996 - 1997	AM20020		
TOYOTA	PRIUS	NHW11	4 CYL	1.5	1NZ FXE HYBRID	2000 - 2006	AMZL01		AMZL01N
TOYOTA	PRIUS	NHW20	4 CYL	1.5	1NZ FXE HYBRID	2007-2011	AMTL01		AMTL01N
TOYOTA	RAV 4	ACA	4 CYL	2.0	1AZFE	1999 - 2004	AMZL01		AMZL01N
TOYOTA	RAV 4	ACA	4 CYL	2.4	2AZFE	1999 - 2004	AMZL01		AMZL01N
TOYOTA	RAV 4	GSA	6 CYL	3.5	2GRFE	2005-2006	AMZL01		AMZL01N
TOYOTA	RAV 4	GSA	6 CYL	3.5	2GRFE	2007-2011	AMTL01		AMTL01N
TOYOTA	SUPRA	MA61	6 CYL	2.8	5M	1983 - 1985	AM43080		
TOYOTA	SUPRA	MA61	6 CYL	2.8	5M	1986 - 1988	AM43180		



AM16020



AM43180



AMTL01



AMZL01

**Cant Find the Air Mass Meter your looking for?**  
 Please contact Injectronics on 03 8792 6999 or NZ 0800 536 547  
 or search online @ [www.injectronics.com.au](http://www.injectronics.com.au)

Make	Model	Series	Cyl	Engine SIZE	Engine type	Year	Remanufactured Change over	NEW OEM Complete Assy	NEW OEM Insert Only
<b>TOYOTA continued</b>									
TOYOTA	SUPRA	MA70	6 CYL	3.0	7M GTEU	1989 - 1991	AM42030		
TOYOTA	SUPRA	MA70	6 CYL	3.0	7MG	1986 - 1990	AM43150		
TOYOTA	SUPRA		6 CYL	3.0	7M-GTE	1985 - 1992	AM0041		
TOYOTA	SURF		4 CYL		3RZ FE	1996 - 2000	AM75010		
TOYOTA	TARAGO	ACR	4 CYL	2.4	2AZFE	2000 - 2006	AMZL01		AMZL01N
TOYOTA	TARAGO	GSR	6 CYL	3.5	2GRFE	2007-2011	AMTL01		AMTL01N
TOYOTA	TARAGO	TCR	4 CYL	2.4	2TZ	1990-1996	AM76010		
TOYOTA	TARAGO	YR	4 CYL	2.2	4Y	1986 - 1989	AM73010		
TOYOTA	YARIS	NCP90	4 CYL	1.3	2NZFE	2005-2006	AMZL01		AMZL01N
TOYOTA	YARIS	NCP91	4 CYL	1.5	1NZFE	2005-2006	AMZL01		AMZL01N
TOYOTA	YARIS	NCP93	4 CYL	1.5	1NZFE	2007-2011	AMTL01		AMTL01N
<b>VOLKSWAGEN</b>									
VOLKSWAGEN	BEETLE	1Y	4 CYL	2.0	AZJ	2003 - 2011		AM8060N	AM60BOSN
VOLKSWAGEN	BEETLE		4 CYL	1.6	AYD	2001 - 2003		AM6010CN	
VOLKSWAGEN	BEETLE		4 CYL	1.6	BFS	2002 - 2011		AM6010CN	
VOLKSWAGEN	BEETLE		4 CYL	1.8	AWU Turbo	2000 - 2006			AM80BOSN
VOLKSWAGEN	BEETLE		4 CYL	1.8	AWV Turbo	6/2000 - 6/2004			AM80BOSN
VOLKSWAGEN	BEETLE		4 CYL	1.9	BSW diesel	2005 - 2011		AM2531N	
VOLKSWAGEN	BEETLE		4 CYL	2.0	AQY	1999 - 2003	AM8002	AM8002N	
VOLKSWAGEN	BEETLE		4 CYL	2.0	BGD	7/2003 -		AM8060N	AM60BOSN
VOLKSWAGEN	BORA	4MOTION	6 CYL	2.8	AUE	3/2000 - 4/2001			AM81BOSN
VOLKSWAGEN	BORA	4MOTION	6 CYL	2.8	BDE	5/2001 - 5/2003	AM8017	AM8017N	AM81BOSN
VOLKSWAGEN	BORA	V5	5 CYL	2.3	AGZ	9/1998 - 2/2001		AM7529N	
VOLKSWAGEN	BORA	V5	5 CYL	2.3	AQN	9/2000 - 5/2005			AM9601N
VOLKSWAGEN	BORA		4 CYL	2.0	APK	11/1998 - 5/2005	AM8002	AM8002N	
VOLKSWAGEN	BORA		4 CYL	2.0	APK	9/1998 - 5/2005	AM8002	AM8002N	
VOLKSWAGEN <i>TURBO</i>	CADDY		4 CYL	1.9	BJB	2/2004 - 5/2008		AM2531N	
VOLKSWAGEN	CADDY		4 CYL	1.9	BLS	6/2005 - 5/2008		AM2531N	
VOLKSWAGEN <i>TURBO DIESEL</i>	CARAVELLE	T4	5 CYL	2.5	ACV	1/1995 - 3/1998		AM1510N	
VOLKSWAGEN <i>DIESEL</i>	CARAVELLE		4 CYL	2.5	ACV/ AUF	3/1998 - 6/2003			AM80BOSN
VOLKSWAGEN	CARAVELLE		5 CYL	2.5	AET	8/1996 - 9/2003		AM1580N	
VOLKSWAGEN	CARAVELLE		6 CYL	2.8	AMV	5/2000 - 6/2005	AM8017	AM8017N	AM81BOSN
VOLKSWAGEN	EOS		4 CYL	2.0	BMM	5/2006 - 2008			AM80BOSN



AM6010A



AM8017



AM8002



AM8060



AM2531



AM8060



AM7117



AM2461



**Cant Find the Air Mass Meter your looking for?**  
**Please contact Injectronics on 03 8792 6999 or NZ 0800 536 547**  
**or search online @ [www.injectronics.com.au](http://www.injectronics.com.au)**

Make	Model	Series	Cyl	Engine SIZE	Engine type	Year	Remanufactured Change over	NEW OEM Complete Assy	NEW OEM Insert Only
<b>VOLKSWAGEN continued</b>									
VOLKSWAGEN	GOLF	TYPE 3	4 CYL	2.0	ADY	1994 - 1995	AM6010A	AM6010AN	
VOLKSWAGEN	GOLF	TYPE 4	4 CYL	1.8	AGN	10/1997 - 10/2000	AM8002	AM8002N	
VOLKSWAGEN	GOLF	TYPE 4	4 CYL	1.6	AEH	1/1998 - 5/2004		AM6010CN	
VOLKSWAGEN	GOLF	TYPE 4	4 CYL	1.6	AKL	10/1997 - 5/2004		AM6010CN	
VOLKSWAGEN	GOLF	TYPE 4	4 CYL	1.6	AVU	9/2000 - 4/2002		AM6010CN	
VOLKSWAGEN <i>TURBO</i>	GOLF	TYPE 4	4 CYL	1.8	AGU	10/1997 - 5/2006	AM7117	AM7117N	
VOLKSWAGEN	GOLF	TYPE 4	4 CYL	2.0	APK	8/1998 - 6/2006	AM8002	AM8002N	
VOLKSWAGEN <i>DIESEL</i>	GOLF	TYPE 5	4 CYL	1.9	BKC	10/2003 - 5/2006		AM2531N	
VOLKSWAGEN <i>DIESEL</i>	GOLF	TYPE 5	4 CYL	2.0	BKD	2004 - 2007		AM2461N	AM80BOSN
VOLKSWAGEN <i>DIESEL</i>	GOLF	TYPE 5	4 CYL	2.0	BMM	2004 - 2008		AM2461N	AM80BOSN
VOLKSWAGEN <i>DIESEL</i>	GOLF	TYPE 5	4 CYL	2.0	BMN	2007 - 2008			AM80BOSN
VOLKSWAGEN	GOLF	TYPE 2	4 CYL	2.0	RV	7/1990 - 11/1992	AM2106		
VOLKSWAGEN <i>TURBO DIESEL</i>	JETTA		4 CYL	2.0	BKD	8/2005 - 8/2009		AM2461N	AM80BOSN
VOLKSWAGEN <i>TURBO DIESEL</i>	JETTA		4 CYL	2.0	BMM	10/2005 - 6/2008		AM2461N	AM80BOSN
VOLKSWAGEN	KOMBI	T5	4 CYL	1.9	AXB	2006 - 2009		AM2531N	
VOLKSWAGEN	KOMBI		4 CYL	2.0		1980 - 1983	AM0032		
VOLKSWAGEN	KOMBI		4 CYL	2.0		1983 - 1985	AM0038		
VOLKSWAGEN	KOMBI		4 CYL	2.0		1987 - 1991	AM2079		
VOLKSWAGEN	KOMBI		4 CYL	2.0		1985 - 1987	AMX0022		
VOLKSWAGEN <i>TURBO DIESEL</i>	MULTIVAN	T5	4 CYL	1.9	AXB	4/2003 -		AM2531N	
VOLKSWAGEN	MULTIVAN		4 CYL	3.2	BKK	2004 - 2010			AM80BOSN
VOLKSWAGEN <i>TURBO DIESEL</i>	MULTIVAN		5 CYL	2.5	AXE	2005 - 2010			AM80BOSN
VOLKSWAGEN <i>TURBO DIESEL</i>	PASSAT	3C	4 CYL	2.0	BKP	2005 - 2007		AM2461N	AM80BOSN
VOLKSWAGEN	PASSAT	V5	5 CYL	2.3	AGZ	9/1998 - 8/2000		AM7529N	
VOLKSWAGEN	PASSAT	V5	5 CYL	2.3	AZX	1/2001 - 5/2005	AM8017	AM8017N	AM81BOSN
VOLKSWAGEN	PASSAT		4 CYL	1.8	ADR	1/1999 - 2/1999			AM80BOSN
VOLKSWAGEN <i>TURBO</i>	PASSAT		4 CYL	1.8	AEB	9/1997 - 12/1998	AM7117	AM7117N	
VOLKSWAGEN	PASSAT		4 CYL	1.8	AEB	8/1997 - 12/1998	AM7117	AM7117N	



Cant Find the Air Mass Meter your looking for?  
 Please contact Injectronics on 03 8792 6999 or NZ 0800 536 547  
 or search online @ [www.injectronics.com.au](http://www.injectronics.com.au)

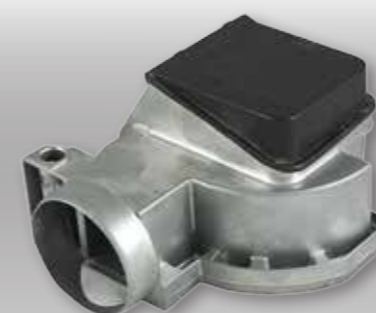
Make	Model	Series	Cyl	Engine SIZE	Engine type	Year	Remanufactured Change over	NEW OEM Complete Assy	NEW OEM Insert Only
<b>VOLKSWAGEN continued</b>									
<b>VOLKSWAGEN TURBO</b>	PASSAT		4 CYL	1.8	ANB	1/1999 - 8/2000	<b>AM8023</b>	<b>AM8023N</b>	<b>AM80BOSN</b>
<b>VOLKSWAGEN</b>	PASSAT		4 CYL	1.8	APT	1999 - 2000			<b>AM80BOSN</b>
<b>VOLKSWAGEN</b>	PASSAT		4 CYL	1.8	APU	1/1999 - 8/2000			<b>AM80BOSN</b>
<b>VOLKSWAGEN</b>	PASSAT		4 CYL	1.8	ARG	2/1999 - 8/2000			<b>AM80BOSN</b>
<b>VOLKSWAGEN</b>	PASSAT		4 CYL	1.8	AWT	10/2000 - 5/2005			<b>AM80BOSN</b>
<b>VOLKSWAGEN</b>	PASSAT		4 CYL	2.0	BMR	3/2005 -		<b>AM2461N</b>	<b>AM80BOSN</b>
<b>VOLKSWAGEN</b>	PASSAT		6 CYL	2.8	AMX	2004 - 2005	<b>AM7008</b>	<b>AM7008N</b>	
<b>VOLKSWAGEN</b>	PASSAT		6 CYL	2.8	APR	1999 - 2001	<b>AM7008</b>	<b>AM7008N</b>	
<b>VOLKSWAGEN</b>	PASSAT		6 CYL	2.8	BBG	10/2000 - 5/2005	<b>AM7008</b>	<b>AM7008N</b>	
<b>VOLKSWAGEN</b>	POLO	GTi	4 CYL	1.8	BJX turbo	2005 - 2006			<b>AM80BOSN</b>
<b>VOLKSWAGEN</b>	POLO		4 CYL	1.9	AXR	2005 - 2007			<b>AM80BOSN</b>
<b>VOLKSWAGEN</b>	POLO		4 CYL	1.9	AXR	2005 - 2007		<b>AM2531N</b>	
<b>VOLKSWAGEN TURBO DIESEL</b>	TOUAREG	7L	10 CYL	5.0	AYH	11/2002 - 11/2006		<b>AM2461N</b>	<b>AM80BOSN</b>
<b>VOLKSWAGEN TURBO DIESEL</b>	TOUAREG	7L	10 CYL	5.0	CBW	2007 - 2011		<b>AM2461N</b>	<b>AM80BOSN</b>
<b>VOLKSWAGEN TURBO DIESEL</b>	TOUAREG	7L	5 CYL	2.5	BAC	2004 - 2007		<b>AM2461N</b>	<b>AM80BOSN</b>
<b>VOLKSWAGEN</b>	TOUAREG		6 CYL	3.2	AZZ	11/2002 - 5/2004			<b>AM80BOSN</b>
<b>VOLKSWAGEN</b>	TOUAREG		6 CYL	3.2	BMV	2004 - 2006			<b>AM80BOSN</b>
<b>VOLKSWAGEN</b>	TOUAREG		8 CYL	4.2	AXQ	12/2002 - 11/2006		<b>AM8060N</b>	<b>AM60BOSN</b>
<b>VOLKSWAGEN</b>	TRANSPORTER		4 CYL	2.5	70XA	1996 - 2003	<b>AM6461</b>	<b>AM6461N</b>	
<b>VOLKSWAGEN</b>	TRANSPORTER		5 CYL	2.5	AET	1996 - 2003		<b>AM1580N</b>	
<b>VOLKSWAGEN</b>	TRANSPORTER		4 CYL	2.0		1998 - 2003	<b>AM2079</b>		
<b>VOLKSWAGEN</b>	TRANSPORTER		4 CYL	2.0		1998 - 2003	<b>AM2216</b>		<b>AM87BOSN</b>



AM8023



AM6461



AM2079



AM2216



AM7008



AM7008

**Cant Find the Air Mass Meter your looking for?**  
**Please contact Injectronics on 03 8792 6999 or NZ 0800 536 547**  
**or search online @ [www.injectronics.com.au](http://www.injectronics.com.au)**

Make	Model	Series	Cyl	Engine SIZE	Engine type	Year	Remanufactured Change over	NEW OEM Complete Assy	NEW OEM Insert Only
<b>VOLKSWAGEN continued</b>									
<b>VOLKSWAGEN</b>	TRANSPORTER		4 CYL	2.0		1998 - 2003			
<b>VOLKSWAGEN</b>	TRANSPORTER		4 CYL	2.0		1998 - 2003	<b>AMX0022</b>		
<b>VOLKSWAGEN TURBO DIESEL</b>	TRANSPORTER	T4	5 CYL	2.5	ACV	3/1997 - 6/2003			<b>AM80BOSN</b>
<b>VOLKSWAGEN TURBO DIESEL</b>	TRANSPORTER	T4	5 CYL	2.5	AUF	11/1999 - 6/2003			<b>AM80BOSN</b>
<b>VOLKSWAGEN TURBO DIESEL</b>	TRANSPORTER	T4	5 CYL	2.5	ACV	1/1995 - 3/1998		<b>AM1510N</b>	
<b>VOLKSWAGEN DIESEL</b>	TRANSPORTER	T5	4 CYL	1.9	AXC	2003 - 2006		<b>AM2531N</b>	
<b>VOLKSWAGEN</b>	TRANSPORTER	T5	4 CYL	1.9	BRS	2006 - 2008		<b>AM2531N</b>	
<b>VOLKSWAGEN TURBO DIESEL</b>	TRANSPORTER	T5	5 CYL	2.5	AXD	2004 - 2006			<b>AM80BOSN</b>
<b>VOLKSWAGEN TURBO DIESEL</b>	TRANSPORTER	T5	5 CYL	2.5	AXE	2003 - 2007		<b>AM2461N</b>	<b>AM80BOSN</b>
<b>VOLKSWAGEN DIESEL</b>	TRANSPORTER	T5	6 CYL	3.2	BKK	2004 - 2008			<b>AM80BOSN</b>
<b>VOLKSWAGEN TURBO DIESEL</b>	TRANSPORTER	T5	4 CYL	1.9	AXB	2003 - 2006		<b>AM2531N</b>	
<b>VOLKSWAGEN</b>	TRANSPORTER	T5	4 CYL	1.9	BRR	2006 - 2008		<b>AM2531N</b>	
<b>VOLVO</b>									
<b>VOLVO</b>	240		4 CYL	2.3	B230F	1981 - 1984	<b>AM2002</b>		
<b>VOLVO</b>	240		4 CYL	2.3	B230F	1981 - 1984	<b>AM2007</b>	<b>AM2007N</b>	
<b>VOLVO</b>	240		4 CYL	2.3	B230F	1981 - 1984	<b>AM2016</b>		
<b>VOLVO</b>	240		4 CYL	2.3	B230F	8/1984 - 7/1993	<b>AM2007</b>	<b>AM2007N</b>	
<b>VOLVO</b>	360		4 CYL	2.0	B19E	1982 - 1985	<b>AM2034</b>		
<b>VOLVO</b>	740		4 CYL	2.3	B230F	1984 - 1992	<b>AM2007</b>	<b>AM2007N</b>	
<b>VOLVO</b>	740		4 CYL	2.3	B230F	1984 - 1992	<b>AM2016</b>		
<b>VOLVO</b>	740		4 CYL	2.3	B230F	1984 - 1992	<b>AM2035</b>		
<b>VOLVO</b>	740		4 CYL	2.3	B230FT	1984 - 1991	<b>AM2007</b>	<b>AM2007N</b>	
<b>VOLVO</b>	740		4 CYL	2.3	B230FT	1984 - 1991	<b>AM2016</b>		
<b>VOLVO</b>	760		4 CYL	2.3	B230	1984 - 1986	<b>AM2035</b>		
<b>VOLVO</b>	760		4 CYL	2.3	B230FT	8/1984 - 7/1992	<b>AM2007</b>	<b>AM2007N</b>	
<b>VOLVO</b>	760		4 CYL	2.3	B230FT	8/1984 - 7/1992	<b>AM2016</b>		
<b>VOLVO</b>	760		4 CYL	2.3	B234F	8/1988 - 7/1989	<b>AM2016</b>		



AM2002



AM2007



AMX0022



AM2016



AM2035



AM2461N

**Cant Find the Air Mass Meter your looking for?**  
**Please contact Injectronics on 03 8792 6999 or NZ 0800 536 547**  
**or search online @ [www.injectronics.com.au](http://www.injectronics.com.au)**

Make	Model	Series	Cyl	Engine SIZE	Engine type	Year	Remanufactured Change over	NEW OEM Complete Assy	NEW OEM Insert Only
<b><i>VOLVO continued</i></b>									
<b>VOLVO</b>	760		6 CYL	2.8	B280F	1988 - 1991	<b>AM3006</b>	<b>AM3006N</b>	
<b>VOLVO</b>	850		5 CYL	1.5	B5234T	1993-	<b>AM7107</b>	<b>AM7107N</b>	
<b>VOLVO TURBO</b>	850		5 CYL	2.3	B5234FT	9/1993 - 7/1996	<b>AM7107</b>	<b>AM7107N</b>	
<b>VOLVO</b>	850		5 CYL	2.5	B2554S	8/1996 - 8/1997	<b>AM7107</b>	<b>AM7107N</b>	
<b>VOLVO TURBO</b>	850		5 CYL	2.5	B5254T	9/1996 - 7/1996	<b>AM7107</b>	<b>AM7107N</b>	
<b>VOLVO TURBO</b>	850		5 CYL	2.5	B5254T	9/1996 - 7/1997	<b>AM7107</b>	<b>AM7107N</b>	
<b>VOLVO</b>	940		4 CYL	2.3	B230	1990 - 1995	<b>AM2016</b>		
<b>VOLVO</b>	940		4 CYL	2.3	B230F	6/1991 - 7/1995	<b>AM2016</b>		
<b>VOLVO</b>	940		4 CYL	2.3	B230FK	9/1994 - 7/1997	<b>AM2016</b>		
<b>VOLVO</b>	940		4 CYL	2.3	B230FT	9/1990 - 7/1996	<b>AM2016</b>		
<b>VOLVO</b>	940		4 CYL	2.3	B234F	9/1990 - 7/1992	<b>AM2016</b>		
<b>VOLVO</b>	C70		5 CYL	2.3	B5234T3	8/1998 - 7/2002	<b>AM8045</b>	<b>AM8045N</b>	<b>AM83BOSN</b>
<b>VOLVO TURBO</b>	C70		5 CYL	2.3	B5234T3	9/1997 - 7/1998	<b>AM7107</b>	<b>AM7107N</b>	
<b>VOLVO</b>	S40		4 CYL	1.8	B4184S	7/1995 - 8/1999		<b>AM9624N</b>	
<b>VOLVO</b>	S40		4 CYL	1.8	B4184S2	8/1999 - 1/2003		<b>AM9624N</b>	
<b>VOLVO</b>	S40		4 CYL	2.0	B4204S	7/1995 - 8/1999		<b>AM9624N</b>	
<b>VOLVO</b>	S40		4 CYL	2.0	B4204S2	8/1999 - 1/2004		<b>AM9624N</b>	
<b>VOLVO</b>	S40		4 CYL	2.0	B4204T3	1/2001 - 1/2004		<b>AM96133N</b>	
<b>VOLVO</b>	S40		4 CYL	2.0	B4204T5	1/2001 - 1/2004		<b>AM96133N</b>	
<b>VOLVO</b>	S40/V40		4 CYL	1.9	B4194T / T2	5/1997 - 7/2000	<b>AM9604</b>	<b>AM9604N</b>	
<b>VOLVO</b>	S40/V40		4 CYL	2.0	B4204T / T2	10/1997 - 7/2000	<b>AM9604</b>	<b>AM9604N</b>	
<b>VOLVO UP TO VIN YF559006</b>	S40/V40		4 CYL	2.0	B4204T3 / T5	7/2000 - 12/2000	<b>AM9604</b>	<b>AM9604N</b>	
<b>VOLVO</b>	S60		5 CYL	2.3	B5234T3	11/2000 - 7/2001	<b>AM8045</b>	<b>AM8045N</b>	<b>AM83BOSN</b>
<b>VOLVO</b>	S60		5 CYL	2.4	B5244S	2000 - 2007	<b>AM2199</b>	<b>AM2199N</b>	
<b>VOLVO</b>	S60		5 CYL	2.5	B5244T3	11/2000 - 7/2001	<b>AM8045</b>	<b>AM8045N</b>	<b>AM83BOSN</b>
<b>VOLVO</b>	S70		5 CYL	2.3	B5234T3	1/1997 - 7/1997	<b>AM7107</b>	<b>AM7107N</b>	
<b>VOLVO</b>	S70		5 CYL	2.5	B5254S	1/1997 - 7/1998	<b>AM7107</b>	<b>AM7107N</b>	
<b>VOLVO</b>	S70		5 CYL	2.5	B5254T	1/1997 - 7/1998	<b>AM7107</b>	<b>AM7107N</b>	
<b>VOLVO</b>	S70 / V70		5 CYL	2.3	B5234T3	8/1998 - 7/2000	<b>AM8045</b>	<b>AM8045N</b>	<b>AM83BOSN</b>
<b>VOLVO</b>	S70 / V70		5 CYL	2.5	B5254T	8/1998 - 7/1999	<b>AM8045</b>	<b>AM8045N</b>	<b>AM83BOSN</b>
<b>VOLVO</b>	S80		5 CYL	2.4	B5244S	1998 - 2006	<b>AM2199</b>		
<b>VOLVO</b>	S80		6 CYL	3.0	B6304S3	6/1998 - 7/1999	<b>AM8045</b>	<b>AM8045N</b>	<b>AM83BOSN</b>
<b>VOLVO</b>	V40		4 CYL	1.8	B4184S	7/1995 - 8/1999		<b>AM9624N</b>	
<b>VOLVO</b>	V40		4 CYL	1.8	B4184S2	8/1999 - 1/2004		<b>AM9624N</b>	
<b>VOLVO</b>	V40		4 CYL	2.0	B4204S	7/1995 - 8/1999		<b>AM9624N</b>	
<b>VOLVO</b>	V40		4 CYL	2.0	B4204S2	8/1999 - 1/2004		<b>AM9624N</b>	
<b>VOLVO FROM VIN#1F600000</b>	V40		4 CYL	2.0	B4204T3	1/2001 - 1/2004		<b>AM96133N</b>	
<b>VOLVO FROM VIN#600000</b>	V40		4 CYL	2.0	B4204T5	1/2001 - 1/2004		<b>AM96133N</b>	
<b>VOLVO</b>	V70		5 CYL	2.3	B5234T3	1/1997 - 7/1998	<b>AM7107</b>	<b>AM7107N</b>	
<b>VOLVO</b>	V70		5 CYL	2.4	B5244S	2000 - 2008	<b>AM2199</b>		
<b>VOLVO</b>	V70		5 CYL	2.5	B5254S	1/1997 - 6/1998	<b>AM7107</b>	<b>AM7107N</b>	
<b>VOLVO</b>	V70		5 CYL	2.5	B5254T	1/1997 - 7/1998	<b>AM7107</b>	<b>AM7107N</b>	





# REMAN



THE ULTIMATE  
FORM OF RECYCLING



# Injectronics

Injectronics Australia Pty Ltd  
8 Becon Crt Hallam Victoria 3803 Australia  
Head office phone +61 3 8792 6999  
Head office fax +61 3 8795 7205  
Email [sales@injectronics.com.au](mailto:sales@injectronics.com.au)  
[www.injectronics.com.au](http://www.injectronics.com.au)